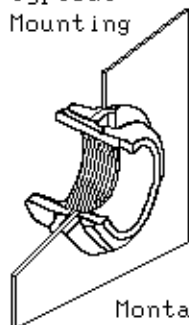
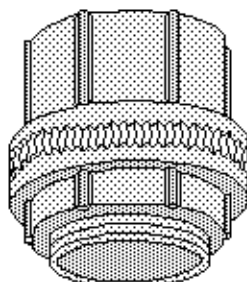
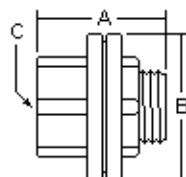


Typical
MountingMontage-
beispiel

1702-1712

A = Overall Length
B = Outside Diameter
C = Thread Size
Dimensions = mm

Cat#	THD.SPEC.		
	A	B	C
1702	33.3	39.3	1/2 - 14 NPT
1703	34.9	44.1	3/4 - 14 NPT
1704	40.5	52.0	1 - 11 1/2 NPT
1705	40.5	61.5	1 1/4 - 11 1/2 NPT
1706	40.5	71.0	1 1/2 - 11 1/2 NPT
1708	40.5	83.7	2 - 11 1/2 NPT
1710	65.1	92.1	2 1/2 - 8 NPT
1712	66.7	107.2	3 - 8 NPT
1714	95.3	122.2	3 1/2 - 8 NPT
1716	108.7	134.9	4 - 8 NPT

Threaded Hubs - For use with threaded rigid/IMC conduit, to connect and bond to a threadless opening in a box or enclosure. May be used in wet or dry locations. Rugged die cast zinc construction insures mechanical protection. Insulated throat protects wires and reduces wire pulling effort. O-ring seals the assembly and provides a raintight seal. UL Listed - Standard 514B. CSA Certified - C22.2 No. 18. NPT-Scru-Tite hub with internal and external thread and locknut.

NPT-Rohr-Gewindeanschluß, mit Innen- & Außengewinde und Gegenmutter, Zinkguß

Cat.No	Nominal	Wght ea	UPE/Pack	EDP No	Cat.No	Nominal	Wght ea	UPE/Pack	EDP No
1702	1/2"	93g	25	C 100136	1708	2"	418g	10	D 100141
1703	3/4"	128g	25	C 100137	1710	2 1/2"	802g	5	D 100143
1704	1"	183g	25	D 100138	1712	3"	1067g	2	D 100144
1705	1 1/4"	234g	10	D 100139	1714	3 1/2"	1362g	2	D 104333
1706	1 1/2"	324g	10	D 100140	1716	4"	1634g	2	D 104334