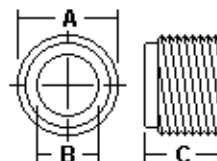


NPT  
Reducing  
Bushings

Eisen/Iron

NPT Gewinde-  
Reduzierungen



Dimensions = mm

A=O.D./thread size

B=Throat I.D./thread size

C=Thickness

1141-1156



Stahl/Steel



1160-1186

UL Listed - Standard 514B  
(Cat# 1141 - Cat# 1156)

| Cat  | A     | Thrd Spec          | B    | Thrd Spec          | C    |
|------|-------|--------------------|------|--------------------|------|
| 1141 | 20.6  | 1/2 - 14 NPT       | 12.7 | 3/8 - 18 NPT       | 13.5 |
| 1142 | 25.8  | 3/4 - 14 NPT       | 15.5 | 1/2 - 14 NPT       | 14.3 |
| 1143 | 32.5  | 1 - 11 1/2 NPT     | 15.5 | 1/2 - 14 NPT       | 15.9 |
| 1144 | 32.5  | 1 - 11 1/2 NPT     | 20.6 | 3/4 - 14 NPT       | 15.9 |
| 1145 | 41.3  | 1 1/4 - 11 1/2 NPT | 15.5 | 1/2 - 14 NPT       | 17.5 |
| 1146 | 41.3  | 1 1/4 - 11 1/2 NPT | 20.6 | 3/4 - 14 NPT       | 17.5 |
| 1147 | 41.3  | 1 1/4 - 11 1/2 NPT | 26.6 | 1 - 11 1/2 NPT     | 17.5 |
| 1148 | 47.6  | 1 1/2 - 11 1/2 NPT | 15.5 | 1/2 - 14 NPT       | 18.3 |
| 1149 | 47.6  | 1 1/2 - 11 1/2 NPT | 20.6 | 3/4 - 14 NPT       | 18.3 |
| 1150 | 47.6  | 1 1/2 - 11 1/2 NPT | 26.6 | 1 - 11 1/2 NPT     | 18.3 |
| 1151 | 47.6  | 1 1/2 - 11 1/2 NPT | 34.1 | 1 1/4 - 11 1/2 NPT | 18.3 |
| 1152 | 59.1  | 2 - 11 1/2 NPT     | 15.5 | 1/2 - 14 NPT       | 21.4 |
| 1153 | 59.1  | 2 - 11 1/2 NPT     | 46.0 | 3/4 - 14 NPT       | 21.4 |
| 1154 | 59.1  | 2 - 11 1/2 NPT     | 26.6 | 1 - 11 1/2 NPT     | 21.4 |
| 1155 | 59.1  | 2 - 11 1/2 NPT     | 34.1 | 1 1/4 - 11 1/2 NPT | 21.4 |
| 1156 | 59.1  | 2 - 11 1/2 NPT     | 40.5 | 1 1/2 - 11 1/2 NPT | 21.4 |
| 1160 | 71.4  | 2 1/2 - 8 NPT      | 34.1 | 1 1/4 - 11 1/2 NPT | 49.6 |
| 1161 | 71.4  | 2 1/2 - 8 NPT      | 39.7 | 1 1/2 - 11 1/2 NPT | 54.4 |
| 1162 | 71.4  | 2 1/2 - 8 NPT      | 51.2 | 2 - 11 1/2 NPT     | 52.8 |
| 1168 | 88.1  | 3 - 8 NPT          | 51.2 | 2 - 11 1/2 NPT     | 53.2 |
| 1169 | 88.1  | 3 - 8 NPT          | 61.1 | 2 1/2 - 8 NPT      | 53.2 |
| 1175 | 100.8 | 3 1/2 - 8 NPT      | 51.2 | 2 - 11 1/2 NPT     | 53.2 |
| 1176 | 100.8 | 3 1/2 - 8 NPT      | 61.1 | 2 1/2 - 8 NPT      | 53.2 |
| 1177 | 100.8 | 3 1/2 - 8 NPT      | 76.2 | 3 - 8 NPT          | 53.2 |
| 1185 | 113.5 | 4 - 8 NPT          | 76.2 | 3 - 8 NPT          | 53.2 |
| 1186 | 113.5 | 4 - 8 NPT          | 88.1 | 3 1/2 - 8 NPT      | 53.2 |

| Cat.No. | External | Internal | UPE/Packed |
|---------|----------|----------|------------|
| 1141    | 1/2      | 3/8      | 100        |
| 1142    | 3/4      | 1/2      | 100        |
| 1143    | 1        | 1/2      | 50         |
| 1144    | 1        | 3/4      | 50         |
| 1145    | 1 1/4    | 1/2      | 50         |
| 1146    | 1 1/4    | 3/4      | 50         |
| 1147    | 1 1/4    | 1        | 50         |
| 1148    | 1 1/2    | 1/2      | 50         |
| 1149    | 1 1/2    | 3/4      | 50         |
| 1150    | 1 1/2    | 1        | 50         |
| 1151    | 1 1/2    | 1 1/4    | 50         |
| 1152    | 2        | 1/2      | 25         |
| 1153    | 2        | 3/4      | 25         |
| 1154    | 2        | 1        | 25         |
| 1155    | 2        | 1 1/4    | 25         |
| 1156    | 2        | 1 1/2    | 25         |

| Cat.No. | External | Internal | UPE/Packed |
|---------|----------|----------|------------|
| 1160    | 2 1/2    | 1 1/4    | 10         |
| 1161    | 2 1/2    | 1 1/2    | 10         |
| 1162    | 2 1/2    | 2        | 10         |
| 1168    | 3        | 2        | 10         |
| 1169    | 3        | 2 1/2    | 5          |
| 1175    | 3 1/2    | 2        | 5          |
| 1176    | 3 1/2    | 2 1/2    | 5          |
| 1177    | 3 1/2    | 3        | 5          |
| 1185    | 4        | 3        | 5          |
| 1186    | 4        | 3 1/2    | 5          |