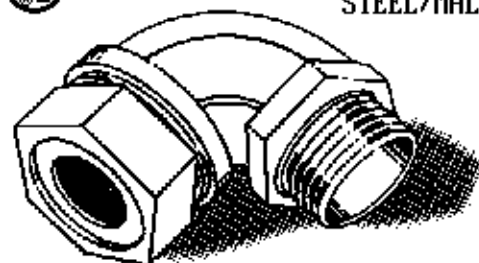
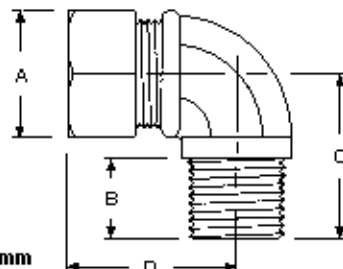




514B

90 DEGREE CONNECTORS
STEEL/MALLEABLE IRONListed
Standard 514B

DIMENSIONS = mm

HUB SIZE	FORM SIZE	A	B	C	D
1/2	F1	27.0	15.1	33.3	36.5
1/2	F2	30.2	15.1	33.3	36.5
3/4	F3	34.9	15.1	36.5	41.3

A = Nut Flats

B = Thread length

C = Thread to bend

D = Nut to bend

Catalog-No.	Form	Cable \varnothing	UPE/Packed
3792-1	F1	3.2- 6.4	25
3792-2	F1	6.4- 9.5	25
3792-3	F1	9.5-10.8	25
3792-4	F1	10.8-12.7	25
3792-5	F2	9.5-12.7	25
3792-6	F2	12.7-15.2	25
3793-1	F3	6.4- 9.5	10
3793-2	F3	9.5-12.7	10
3793-3	F3	12.7-15.2	10
3793-4	F3	15.2-16.5	10
3793-6	F3	16.5-17.8	10
3793-5	F3	17.8-21.6	10

Features:

- For use in wet or dry locations to provide a liquidtight and strain relief termination for flexible cord and cable
- These liquidtight strain relief cord connectors are suitable for use in Class 1, Division 2; Class 2, Division 1 and 2; and Class 3, Division 1 and 2 hazardous locations
- All steel/malleable construction provides mechanical strength
- All components are zinc electro plated for corrosion protection
- Screw machined bodies (straights through 1") and precision threaded malleable iron castings mate with other components perfectly, without strain or distortion
- Washers have size range imprinted for identification - eliminates misidentifying inventory