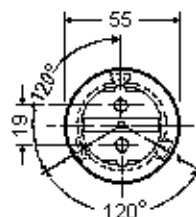
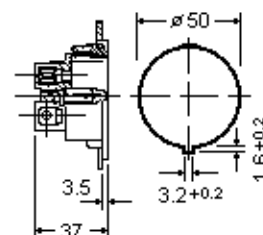


1101000

Dimensions = mm

For Panel Thickness
1 to 3.5 mm

SCHUKO-Einbausteckdosen

Thermoplast, einteilig,
Schnellbefestigung durch
Stahlfedern2-polig + PE, 10/16A 250Vac,
nach DIN 49440

German "SCHUKO" Snap-In Receptacles

Thermoplastic, Single-Piece Con-
struction, Quick Snap-In with
Steel Spring Bracket2-Pole 3-Wire Grounding, 10/16 Amp,
250 Volt AC, according DIN 49440

Catalog No.	Color	Description	Wght/ea	UPE/Pack	EDP-No
1101000	Black	Round SCHUKO Snap-In Receptacle	31g	100	115404
1101010	White	Round SCHUKO Snap-In Receptacle	31g	100	115405