

### Enclosed Industrials, Fiberglass Housing

Industrials

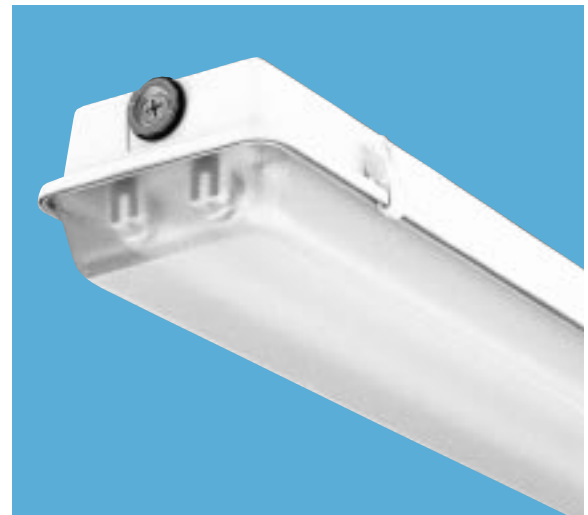
Catalog Number

Example: DM 2 96 120 ES

# DM

# DMW

Series	Lamp type	Voltage	Options <sup>3</sup>
DM Damp location	32 32W T8 (48")	120, 277, 347	For options and accessories, see below and page 78.
DMW Wet location	40 40W T12 (48")	Others available.	
For tandem double-length unit, add prefix T. Example: TDM	48 38W Slimline (48")		
	48HO 60W 800mA (48")		
	96 75W Slimline (96")		
	96HO 110W 800mA (96")		
	96T8 59W T8 Slimline (96")		
	96T8HO 86W T8 380mA (96")		
Number of lamps	Diffuser type		
1, 2, 3 <sup>1</sup> Not included.	(blank) Acrylic, 15% DR		
	AR High-impact acrylic, 50% DR		
	DP Deep acrylic, 15% DR <sup>2</sup>		
	ARDP Deep high-impact acrylic, 50% DR <sup>2</sup>		



#### Accessories (Order as separate catalog numbers.)

Catalog Number	Description
BCD	Mounting bracket to chain-hang DM/DMW. (2 per package. Excludes chain.)
HC	Wire hook and 36" chain set (2 per package)
WLF	Field-installable wet location fittings to stem-hang DMW on 1/2" rigid conduit (2 per package). For factory-installed fittings on top, order WLF as option.

#### PRODUCT AVAILABILITY

Series	Lamps per Cross Section	Lamps per Fixture	Lamp Type	Width in.(cm)	Depth in.(cm)	Length in.(cm)
DM,DMW	1, 2, 3 <sup>3</sup>	1, 2, 3	32, 40	7 7/8(18.4)	4 3/4(9.5)	50(127.0)
DM,DMW	1, 2	1, 2	48, 48HO	7 7/8(18.4)	5 5/8(13.3)	50(127.0)
DM,DMW (DP or ARDP)	1, 2, 3 <sup>3</sup>	1, 2, 3	32, 40	7 7/8(18.4)	5 5/8(13.3)	50(127.0)
TDM,TDMW	1, 2	2, 4	32, 40, 48, 48HO	7 7/8(18.4)	5 5/8(13.3)	98(248.9)
DM,DMW	1, 2	1, 2	96, 96HO, 96T8, 96T8HO	7 7/8(18.4)	5 5/8(13.3)	98(248.9)

#### NOTES:

- 32W T8 lamps available on 3-lamp models only.
- Deep lens is standard on 4' slimline, HO (800mA) and 8' fixtures. To match deep appearance on 4' rapid start, order DP or ARDP option.
- Cold weather ballasts (CW or CW20) for use at 40°F ambient temperature or below.



#### Features

Impact-resistant, UV-resistant, fiberglass reinforced polyester housing.

DM is UL listed for damp locations, DMW is UL listed for wet locations (as shown in photo above).

Wet location fittings on ends standard on DMW.

Acrylic diffuser standard. For optional high-impact clear diffuser, specify AR diffuser.

For surface, stem or chain mounting.

Diffuser secured to fully gasketed housing by six captive latches on 4' fixture, 10 latches on 8' fixture.

## FEATURES

- Damp location (DM) or wet location (DMW) enclosed and gasketed fixtures.
- 4' versions also available in tandem-wired 8' lengths.
- Impact-resistant, UV-resistant, reinforced polyester fiberglass housing.
- Shatter-resistant 15% DR acrylic diffuser standard, high-impact 50% DR acrylic diffuser optional.
- Poured-in gasketing provides a continuous seal between housing and diffuser.
- Diffuser secured to fully-gasketed housing by captive, corrosion-resistant, cam-action latches; six provided on 4' units, 10 on 8' units.
- For unit or row installation, surface or suspended mounting.
- Guaranteed for one year against mechanical defects in manufacture.

## SPECIFICATIONS

**BALLAST** — Thermally-protected, resetting, Class P, HPF, non-PCB, UL-listed, CSA-certified ballast is standard. Rapid start lamps are sound rated A. Standard combinations are CBM approved and conform to UL 935.

**WIRING & ELECTRICAL** — Fixture conforms to UL 1570 and is suitable for damp locations (DM). DMW listed for mounting in wet locations. AWM, TFN or THHN wire used throughout, rated for required temperatures.

**MATERIALS** — Housing formed from reinforced polyester fiberglass with cold-rolled steel enclosed wireway. No asbestos is used in this product.

**FINISH** — Five-stage iron-phosphate pretreatment ensures superior paint adhesion and rust resistance. Painted parts finished with high-gloss, baked white enamel.

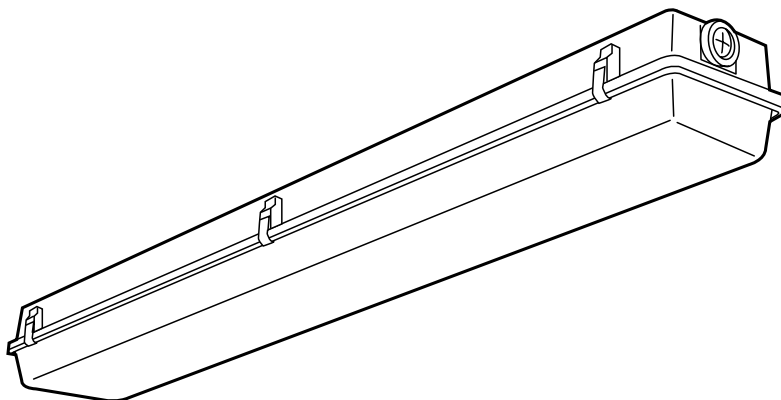
**LISTING** — UL listed and labeled. Listed and labeled to comply with Canadian and Mexican Standards (see options).

Specifications subject to change without notice.

## Enclosed and Gasketed Industrial DM/DMW

### Rapid Start

4' length  
1, 2 or 3 lamps



DMW 2 40 shown

## PHOTOMETRICS

Calculated using the zonal cavity method in accordance with IESNA LM41 procedure. Floor reflectances are 20%. Lamp configurations shown are typical. Full photometric data on these and other configurations available upon request.

### DM/DMW 1 40

Report LTL 4148

S/MH (along) 1.2 (across) 1.6

Coefficient of Utilization

Ceiling	80%			70%			50%			30%		
Wall	70%	50%	30%	70%	50%	30%	50%	30%	10%	50%	30%	10%
1	81	76	72	78	74	70	69	66	63			
2	72	65	59	70	63	57	59	55	50			
3	66	57	49	63	55	48	52	46	42			
4	60	50	42	58	48	41	46	40	35			
5	54	43	36	52	42	35	40	34	29			
10	36	25	19	35	25	18	23	18	14			

### Zonal Lumens Summary

Zone	Lumens	%Lamp	%Fixture
0-30	447	14.2	18.3
0-40	759	24.1	31.1
0-60	1459	46.3	59.8
0-90	2282	72.4	93.6
90-180	157	5.0	6.4
0-180	2439	77.4	100.0

### DM/DMW 2 40

Report LTL 4147

S/MH (along) 1.3 (across) 1.5

Coefficient of Utilization

Ceiling	80%		70%		50%		30%		10%	
Wall	70%	50%	30%	70%	50%	30%	50%	30%	10%	
1	72	68	65	70	66	63	63	60	58	
2	65	59	54	63	57	53	54	50	47	
3	59	52	46	57	50	45	47	43	39	
4	54	45	39	52	44	38	42	37	33	
5	49	40	33	47	39	33	37	32	28	
10	33	23	17	31	23	17	22	17	13	

### Zonal Lumens Summary

Zone	Lumens	%Lamp	%Fixture
0-30	869	13.8	20.3
0-40	1476	23.4	34.4
0-60	2789	44.3	65.0
0-90	4020	63.8	93.7
90-180	272	4.3	6.3
0-180	4293	68.1	100.0

### DM/DMW 2 32

Report LTL 5583

S/MH (along) 1.3 (across) 1.6

Coefficient of Utilization

Ceiling Wall	80%			70%			50%			30%		
	70%	50%	30%	70%	50%	30%	50%	30%	10%	50%	30%	10%
1	82	78	74	80	76	72	71	69	66			
2	74	67	61	72	65	60	61	57	53			
3	67	58	52	65	57	51	54	48	44			
4	61	51	44	59	50	43	47	42	37			
5	56	45	38	54	44	37	42	36	31			
10	37	26	19	36	25	19	24	19	15			

### Zonal Lumens Summary

Zone	Lumens	%Lamp	%Fixture
0-30	884	15.2	19.5
0-40	1511	26.0	33.4
0-60	2883	49.7	63.7
0-90	4260	73.4	94.1
90-180	268	4.6	5.9
0-180	4528	78.1	100.0

## DM/DMW Rapid Start

### MOUNTING DATA

For unit or row installation, surface (ceiling or wall) or suspended mounting.

**DM/DMW** — Drill holes through housing and channel at appropriate locations.

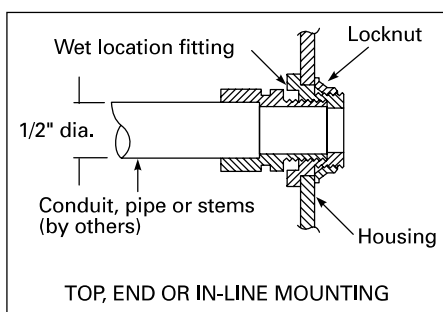
**DMW** — Includes gasketed wet location fittings on ends for power feeding/mounting. Fitting is threaded for 1/2" rigid conduit (optional WLF for top mounting). Attach to surface using fasteners and sealing washers (by others) appropriate to ceiling materials.

**Unit installation** — Minimum of two hangers required.

**Row installation** — Minimum of two hangers required.

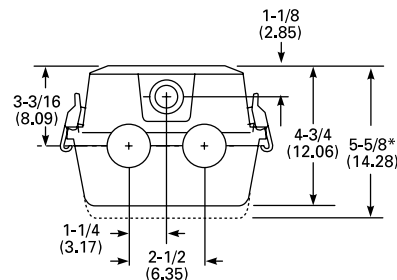
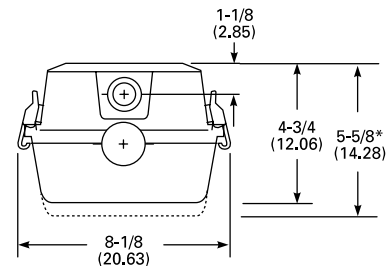
Recommend 1/2" nipple with union (by others) for DMW.

See ACCESSORIES below for hanging devices.



### DIMENSIONS

Inches (centimeters). Subject to change without notice.

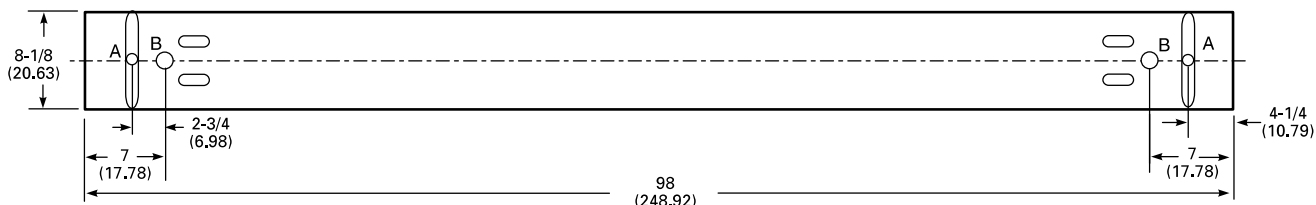
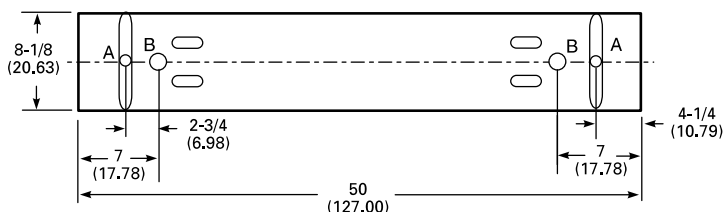


A = 11/16 (1.74) Dia.

B = 1-1/8 (2.86) Dia.

Recommended mounting locations (field drilling required)

\*8' fixtures are 5-5/8" deep



## ORDERING INFORMATION

Example: DMW 2 40 120 ES GLR

Series	Number of lamps	Lamp type	Voltage	Options
DM Damp location		32 32W T8 (48")	120, 277, 347	ES Energy-saving ballasts (40W lamps only).
DMW Wet location	1, 2, 3 <sup>1</sup>	40 40W T12 (48")	Others available	CW Cold-weather ballasts, 0°F starting. <sup>3</sup>
For tandem double-length unit, add prefix T. Example: TDM	Not included			GEB Electronic ballasts, ≤20% THD.
				GEB10IS Electronic ballasts, ≤10% THD, Instant Start. <sup>4</sup>
				GEB10RS Electronic ballasts, ≤10% THD, Rapid Start. <sup>5</sup>
				GLR Internal fast-blow fuse.
				GMF Internal slow-blow fuse.
				RIF1 Radio interference filter, 1 per fixture.
				STSL Stainless steel latches.
				CSA Listed and labeled to comply with Canadian Standards.
				NOM Listed and labeled to comply with Mexican Standards.
				WLF Wet location fittings (1 pair, installed in fixture top).
				SW Palletized and stretch-wrapped.

### Accessories

Order as separate catalog numbers.

**SQ** Swivel-stem hanger (specify length in 2" increments).

**1B** Ceiling spacer (adjusts from 1-1/2" to 2-1/2" from ceiling).

**BCD** Bracket for HC mounting. 2 per package.

**HC36** Chain hangers (1 pair, 36" long). Requires BCD.

**WLF** Wet location fittings (1 pair, not installed).

### Diffuser

(blank) Acrylic(15% DR)

**AR** High-impact acrylic (50% DR)

**DP** Deep acrylic<sup>2</sup>

**ARDP** Deep high-impact acrylic<sup>2</sup>

Notes

1 32W T8 lamps only.

2 Deep lens is standard on 8' fixtures.

3 Not recommended for use in ambient temperatures exceeding 40°F.

4 Available only with 32 lamp type.

5 Available with only 32 and 40 lamp types.

## FEATURES

- Damp location (DM) or wet location (DMW) enclosed and gasketed fixtures.
- 4' versions also available in tandem-wired 8' lengths.
- Impact-resistant, UV-resistant, reinforced polyester fiberglass housing.
- Shatter-resistant 15% DR acrylic diffuser standard, high-impact 50% DR acrylic diffuser optional..
- Poured-in gasketing provides a continuous seal between housing and diffuser.
- Diffuser secured to fully-gasketed housing by captive, corrosion-resistant cam-action latches, six provided on 4' units, 10 on 8' units.
- For unit or row installation, surface or suspended mounting.
- Guaranteed for one year against mechanical defects in manufacture.

## SPECIFICATIONS

**BALLAST** — Thermally protected, resetting, Class P, HPF, non-PCB, UL listed, CSA-certified ballast is standard. Magnetic ballasts are sound rated C. Standard combinations are CBM approved and conform to UL 935.

**WIRING & ELECTRICAL** — Fixture conforms to UL 1570 and is suitable for damp locations (DM). DMW listed for mounting in wet locations. AWM, TFN or THHN wire used throughout, rated for required temperatures.

**MATERIALS** — Housing formed from reinforced polyester fiberglass with cold-rolled steel wire-way. No asbestos is used in this product.

**FINISH** — Five-stage iron-phosphate pretreatment ensures superior paint adhesion and rust resistance. Painted parts finished with high-gloss, baked white enamel.

**LISTING** — UL listed and labeled. Listed and labeled to comply with Canadian and Mexican Standards (see options).

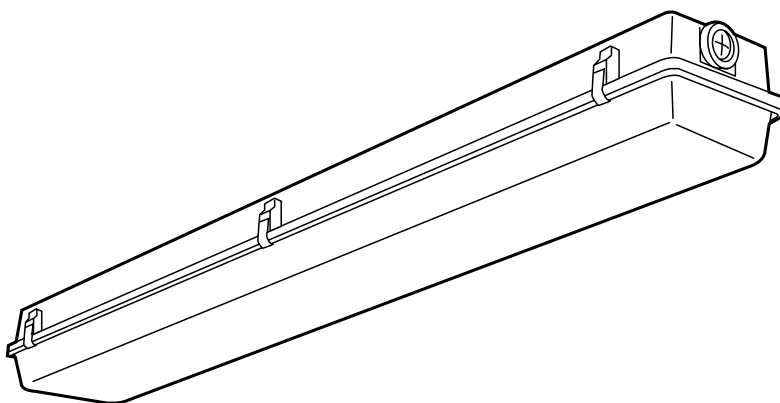
Specifications subject to change without notice.

## Enclosed and Gasketed Industrial

# DM/DMW

## Slimline

4' or 8' length  
1 or 2 lamps



DMW 2 48 shown

## PHOTOMETRICS

Calculated using the zonal cavity method in accordance with IESNA LM41 procedure. Floor reflectances are 20%. Lamp configurations shown are typical. Full photometric data on these and other configurations available upon request.

### DM/DMW 1 48

#### Report LTL 4192

#### S/MH (along) 1.2 (across) 1.5

#### Coefficient of Utilization

Ceiling	80%	70%	50%	30%	70%	50%	30%	50%	30%	10%
Wall	70%	50%	30%	70%	50%	30%	50%	30%	10%	
1	82	77	73	79	74	70	69	65	62	
2	74	66	60	70	63	58	58	54	49	
3	67	58	50	64	55	49	51	45	41	
4	61	51	43	58	49	42	45	39	34	
5	55	44	37	53	43	35	39	33	29	
10	37	26	19	35	25	19	23	18	14	

#### Zonal Lumens Summary

Zone	Lumens	%Lamp	%Fixture
0-30	396	13.2	16.4
0-40	667	22.2	27.6
0-60	1274	42.5	52.6
0-90	2047	68.2	84.6
90-180	372	12.4	15.4
0-180	2420	80.7	100.0

### DM/DMW 2 96

#### Report LTL 4771

#### S/MH (along) 1.2 (across) 1.5

#### Coefficient of Utilization

Ceiling	80%	70%	50%	30%	70%	50%	30%	50%	30%	10%
Wall	70%	50%	30%	70%	50%	30%	50%	30%	10%	
1	78	74	70	75	71	68	66	63	61	
2	70	64	58	67	61	56	57	53	49	
3	64	56	49	61	54	48	50	45	41	
4	58	49	42	56	47	41	44	38	34	
5	53	43	36	51	41	35	39	33	29	
10	35	25	19	34	24	18	23	17	14	

#### Zonal Lumens Summary

Zone	Lumens	%Lamp	%Fixture
0-30	1691	13.4	17.8
0-40	2872	22.8	30.3
0-60	5521	43.8	58.2
0-90	8213	65.2	86.6
90-180	1272	10.1	13.4
0-180	9486	75.3	100.0

### DM/DMW 2 48

#### Report LTL 4188

#### S/MH (along) 1.2 (across) 1.5

#### Coefficient of Utilization

Ceiling	80%	70%	50%	30%	70%	50%	30%	50%	30%	10%
Wall	70%	50%	30%	70%	50%	30%	50%	30%	10%	
1	78	74	70	75	71	68	66	63	61	
2	70	64	58	67	61	56	57	53	49	
3	64	56	49	61	54	48	50	45	41	
4	58	49	42	56	47	41	44	38	34	
5	53	43	36	51	41	35	39	33	29	
10	35	25	19	34	24	18	23	17	14	

#### Zonal Lumens Summary

Zone	Lumens	%Lamp	%Fixture
0-30	805	13.4	17.8
0-40	1368	22.8	30.3
0-60	2629	43.8	58.2
0-90	3911	65.2	86.6
90-180	606	10.1	13.4
0-180	4517	75.3	100.0

## DM/DMW Slimline

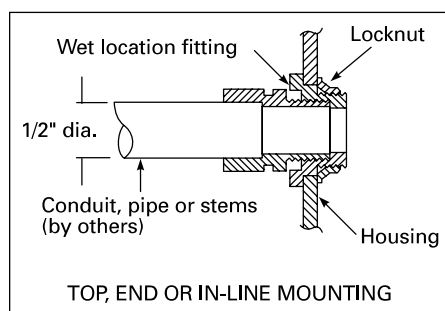
### MOUNTING DATA

For unit or row installation, surface (ceiling or wall) or suspended mounting.  
**DM/DMW** — Drill holes through housing and channel at appropriate locations.

**DMW** — Includes gasketed wet location fittings on ends for power feeding/mounting. Fitting is threaded for 1/2" rigid conduit (optional WLF for top mounting). Attach to surface using fasteners and sealing washers (by others) appropriate to ceiling materials.

Unit installation — Minimum of two hangers required.

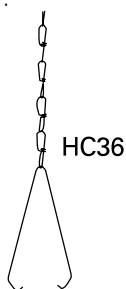
Row installation — Minimum of two hangers required. Recommended 1/2" nipple with union (by others) for DMW.



A = 11/16 (1.74) Dia.

B = 1-1/8 (2.86) Dia.

Recommended mounting locations  
 (field drilling required)



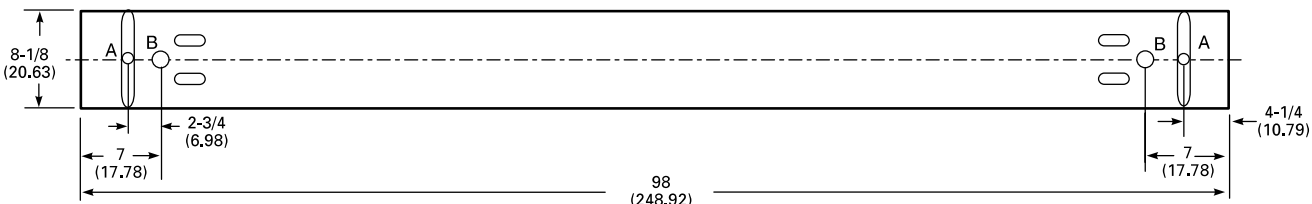
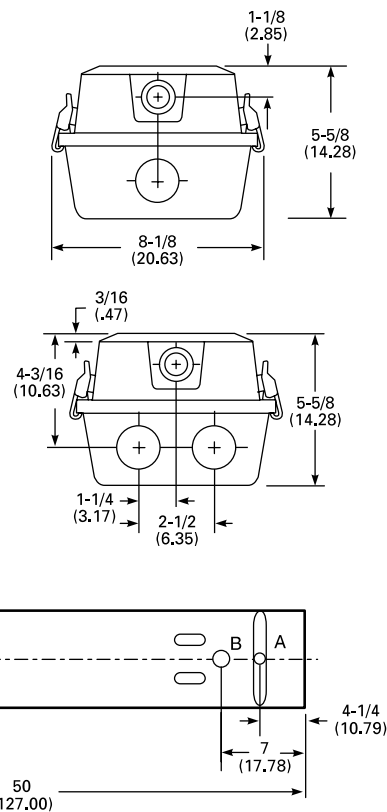
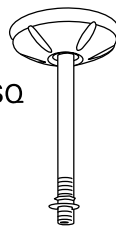
### DIMENSIONS

Inches (centimeters). Subject to change without notice.

1B



SQ



### ORDERING INFORMATION

Example: **DMW 2 48 120 GLR**

Series		Number of lamps		Lamp type		Voltage		Options	
<b>DM</b> Damp location		<b>1, 2</b> Not included		<b>48</b> 38W Slimline (48")		<b>120, 277, 347</b> Others available		<b>ES</b> Energy-saving ballasts (296 ballasts only).	
<b>DMW</b> Wet location				<b>96</b> 75W Slimline (96")				<b>CW</b> Cold-weather ballasts, 0°F starting. Not recommended for use in ambient temperatures exceeding 40°F.	
For tandem double-length unit, add prefix T. Example: <b>TDM</b>				<b>96T8</b> 59W T8 Slimline (96")				<b>GEB</b> Electronic ballasts, ≤20% THD.	
Accessories						Diffuser		<b>GEB10IS</b> Electronic ballasts, ≤10% THD, Instant Start. <sup>1</sup>	
Order as separate catalog numbers.						(blank) Acrylic (15% DR)		<b>GLR</b> Internal fast-blow fuse.	
<b>SQ_</b> Swivel-stem hanger (specify length in 2" increments).						<b>AR</b> High-impact acrylic (50% DR)		<b>GMF</b> Internal slow-blow fuse.	
<b>1B</b> Ceiling spacer (adjusts from 1-1/2" to 2-1/2" from ceiling).								<b>RIF1</b> Radio interference filter, 1 per fixture.	
<b>BCD</b> Bracket for HC mounting. 2 per package.								<b>STSL</b> Stainless steel latches.	
<b>HC36</b> Chain hangers (1 pair, 36" long) Requires BCD.								<b>CSA</b> Listed and labeled to comply with Canadian Standards.	
<b>WLF</b> Wet location fittings (1 pair, not installed).								<b>NOM</b> Listed and labeled to comply with Mexican Standards.	
								<b>WLF</b> Wet location fittings (1 pair, installed, top).	
								<b>SW</b> Palletized and stretch-wrapped.	

Notes

1 Available only with 96 lamp type.

## FEATURES

- Damp location (DM) or wet location (DMW) enclosed and gasketed fixtures.
- 4' versions also available in tandem-wired 8' lengths.
- Impact-resistant, UV-resistant, reinforced polyester fiberglass housing.
- Shatter-resistant 15% DR acrylic diffuser standard, high-impact 50% DR acrylic diffuser optional.
- Poured-in gasketing provides a continuous seal between housing and diffuser.
- Diffuser secured to housing by captive, corrosion-resistant cam-action latches, six provided on 4' units, 10 on 8' units.
- For unit or row installation, suspended mounting only.
- Guaranteed for one year against mechanical defects in manufacture.

## SPECIFICATIONS

**BALLAST** — Thermally protected, resetting, Class P, HPF, non-PCB, UL listed, CSA-certified ballast is standard. Magnetic ballasts are sound rated C. Standard combinations are CBM approved and conform to UL 935.

**WIRING & ELECTRICAL** — Fixture conforms to UL 1570 and is suitable for damp locations (DM), DMW listed for mounting in wet locations. AWM, TFN or THHN wire used throughout, rated for required temperatures.

**MATERIALS** — Housing formed from reinforced polyester fiberglass with cold-rolled steel enclosed wireway. No asbestos is used in this product.

**FINISH** — Five-stage iron-phosphate pretreatment ensures superior paint adhesion and rust resistance. Painted parts finished with high-gloss, baked white enamel.

**LISTING** — UL listed and labeled. Listed and labeled to comply with Canadian and Mexican Standards (see options).

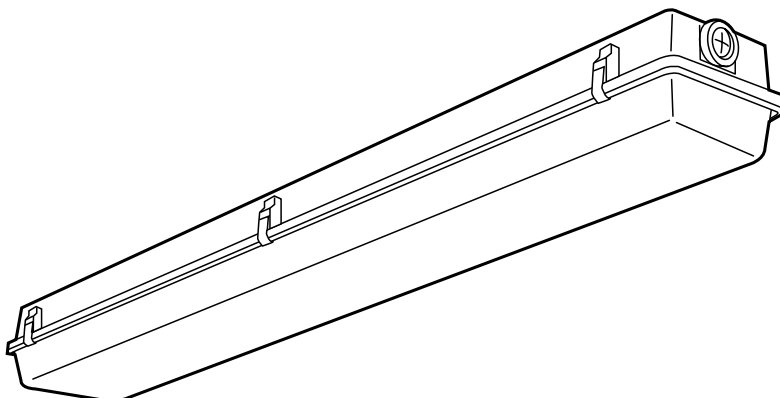
Specifications subject to change without notice.

## Enclosed and Gasketed Industrial

# DM/DMW

## High Output

4' or 8' length  
1 or 2 lamps



DMW 2 48HO shown

## PHOTOMETRICS

Calculated using the zonal cavity method in accordance with IESNA LM41 procedure. Floor reflectances are 20%. Lamp configurations shown are typical. Full photometric data on these and other configurations available upon request.

### DM/DMW 1 48HO

Report LTL 4190

S/MH (along) 1.3 (across) 1.5

Coefficient of Utilization

Ceiling	80%	70%	50%	30%	10%
Wall	70%	50%	30%	10%	
1	82	77	73	78	74
2	73	66	60	70	63
3	67	57	50	63	55
4	61	51	43	58	48
5	55	44	37	52	43
10	37	26	19	35	25

### Zonal Lumens Summary

Zone	Lumens	%Lamp	%Fixture
0-30	553	12.9	16.0
0-40	932	21.7	27.0
0-60	1783	41.5	51.7
0-90	2784	64.7	80.8
90-180	663	15.4	19.2
0-180	3447	80.2	100.0

### DM/DMW 2 96HO

Report L 4215

S/MH (along) 1.2 (across) 1.6

Coefficient of Utilization

Ceiling	80%	70%	50%	30%	10%
Wall	70%	50%	30%	10%	
1	68	64	61	65	62
2	61	55	50	58	53
3	56	48	43	53	46
4	51	42	36	48	41
5	46	37	31	44	36
10	31	21	16	29	21

### Zonal Lumens Summary

Zone	Lumens	%Lamp	%Fixture
0-30	2112	11.5	17.5
0-40	3587	19.5	29.7
0-60	6904	37.5	57.2
0-90	10301	56.0	85.3
90-180	1772	9.6	14.7
0-180	12073	65.6	100.0

### DM/DMW 2 48HO

Report L 4189

S/MH (along) 1.2 (across) 1.5

Coefficient of Utilization

Ceiling	80%	70%	50%	30%	10%
Wall	70%	50%	30%	10%	
1	69	65	62	66	62
2	62	56	51	59	54
3	56	49	43	54	47
4	51	43	37	49	41
5	47	38	32	44	36
10	31	22	16	30	21

### Zonal Lumens Summary

Zone	Lumens	%Lamp	%Fixture
0-30	1002	11.7	17.6
0-40	1697	19.7	29.8
0-60	3249	37.8	57.0
0-90	4790	55.7	84.0
90-180	912	10.6	16.0
0-180	5702	66.3	100.0



## DM/DMW High Output

### MOUNTING DATA

For unit or row installation or suspended mounting.

**DM/DMW** — Drill holes through housing and channel at appropriate locations.

**DMW** — Includes gasketed wet location fittings on ends for power feeding/mounting. Fitting is threaded for 1/2" rigid conduit (optional WLF for top mounting). Attach to surface using fasteners and sealing washers (by others) appropriate to ceiling materials.

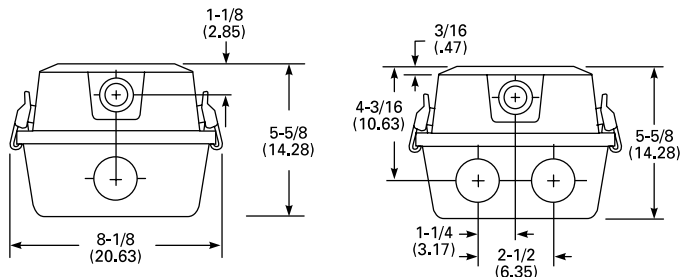
**Unit installation** — Minimum of two hangers required.

**Row installation** — Minimum of two hangers required. Recommended 1/2" nipple with union (by others) for DMW.

See ACCESSORIES below for hanging devices.

### DIMENSIONS

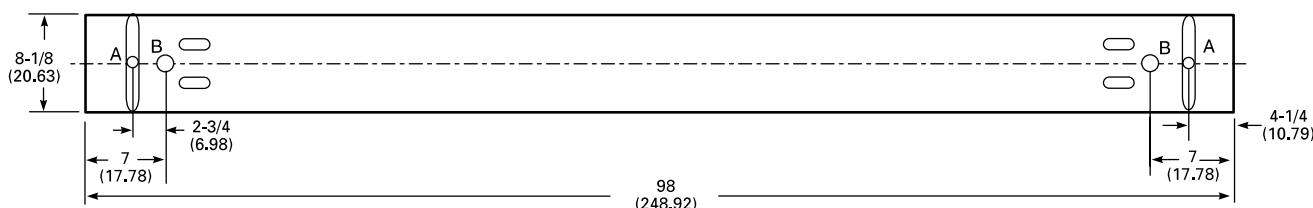
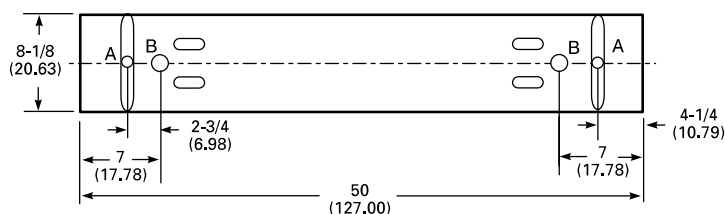
Inches (centimeters). Subject to change without notice.



A = 11/16 (1.74) Dia.

B = 1-1/8 (2.86) Dia.

Recommended mounting locations  
(field drilling required)



## ORDERING INFORMATION

Example: **DMW 2 96HO 120 ES CW20 GLR**

Series	Number of lamps	Lamp type	Diffuser	Voltage	Options
<b>DM</b> Damp location					
<b>DMW</b> Wet location	<b>1, 2</b>	<b>48HO</b> 60W 800mA (48")	(blank) Acrylic (15% DR)	<b>120, 277, 347</b>	<b>ES</b> Energy-saving ballasts (296HO ballasts only).
For tandem double-length unit, add prefix T. Example: <b>TDM</b>	Not included	<b>96HO</b> 110W 800mA (96")	<b>AR</b> High-impact acrylic (50% DR)	Others available	<b>CW20</b> Cold-weather ballasts, -20°F starting. (Required).
		<b>96HOT8</b> 86W T8 380mA (96")			<b>GEB</b> Electronic ballasts, ≤20% THD.
		HO ballasts not recommended for use in ambient temperatures exceeding 40° F.			<b>GEB10RS</b> Electronic ballasts, ≤10% THD, Rapid Start. <sup>1</sup>
					<b>GLR</b> Internal fast-blow fuse.
					<b>GMF</b> Internal slow-blow fuse.
					<b>RIF1</b> Radio interference filter, 1 per fixture.
					<b>STSL</b> Stainless steel latches.
					<b>CSA</b> Listed and labeled to comply with Canadian Standards.
					<b>NOM</b> Listed and labeled to comply with Mexican Standards.
					<b>WLF</b> Wet location fittings (1 pair, installed top).
					<b>SW</b> Palletized and stretch-wrapped.

### Accessories

Order as separate catalog numbers.

**SQ** Swivel-stem hanger (specify length in 2" increments).

**1B** Ceiling spacer (adjusts from 1-1/2" to 2-1/2" from ceiling).

**BCD** Bracket for HC mounting. 2 per package.

**HC36** Chain hangers (1 pair, 36" long). Requires BCD.

**WLF** Wet location fittings (1 pair, not installed).

Notes

1 Available only with 96HO lamp type.