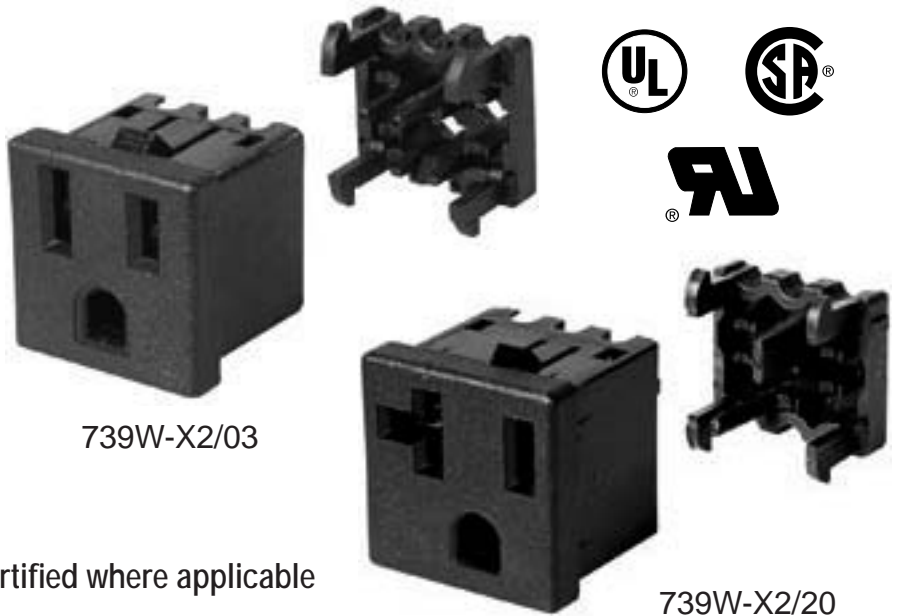


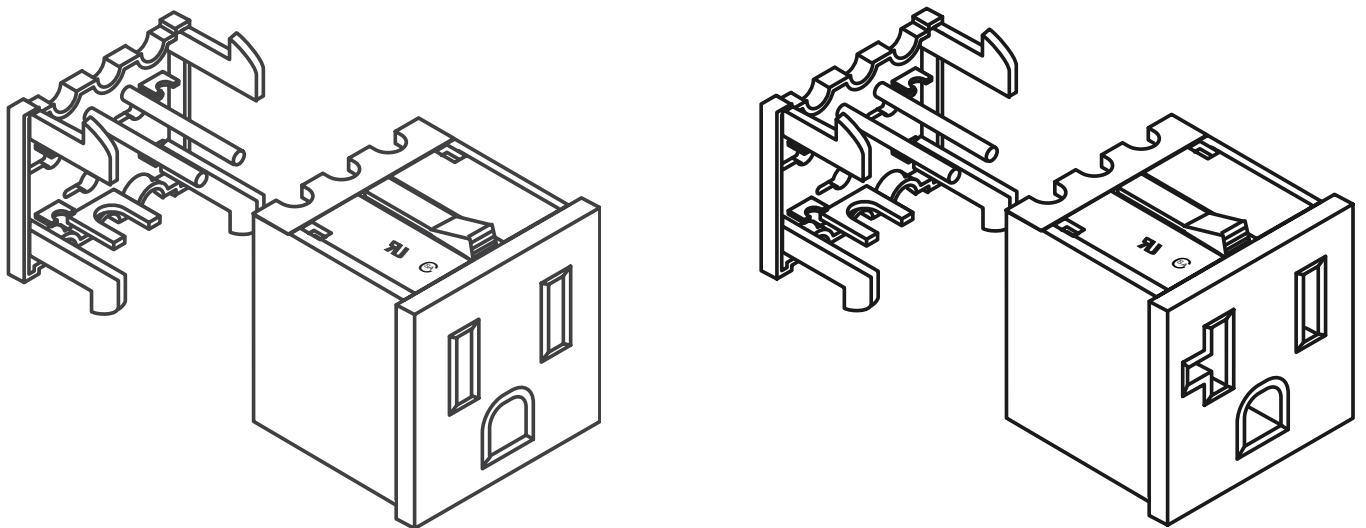
## USA / Canada Snap-In Power Receptacles

### Features

- 2 Pole, 3 Wire Grounding
- Max Rating: 15A or 20A/125VAC
- Panel Thickness: (0.8 - 1.8)mm
- Black Nylon Body to UL94V0
- Body Insulator Black Nylon
- IDC Crimp Terminals #12 or #14 AWG
- Contact Pin Bronze Strip
- UL/cUL Listed or Recognized, CSA Certified where applicable

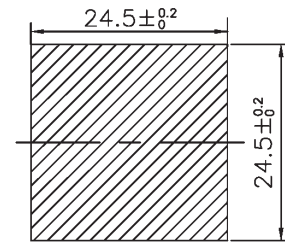
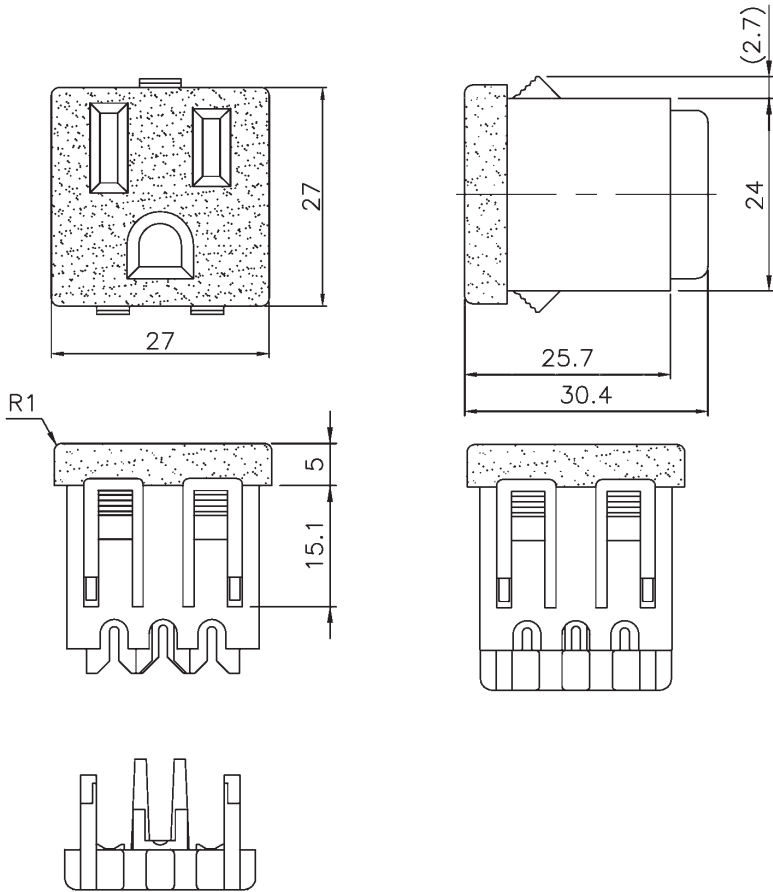


Catalog No.	Description	Weight/ea	VPE/Pack	EDP-No.
<b>739W-X2/03</b>	Receptacle, Black, 15A/125V, NEMA 5-15R	30 g	500	<b>122019</b>
<b>739W-X2/20</b>	Receptacle, Black, 20A/125V, NEMA 5-20R	30 g	500	<b>121670</b>



To learn more about B-I-A please visit us at our  
WEB site: [www.BiaGmbH.com](http://www.BiaGmbH.com)



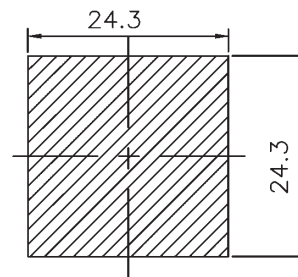
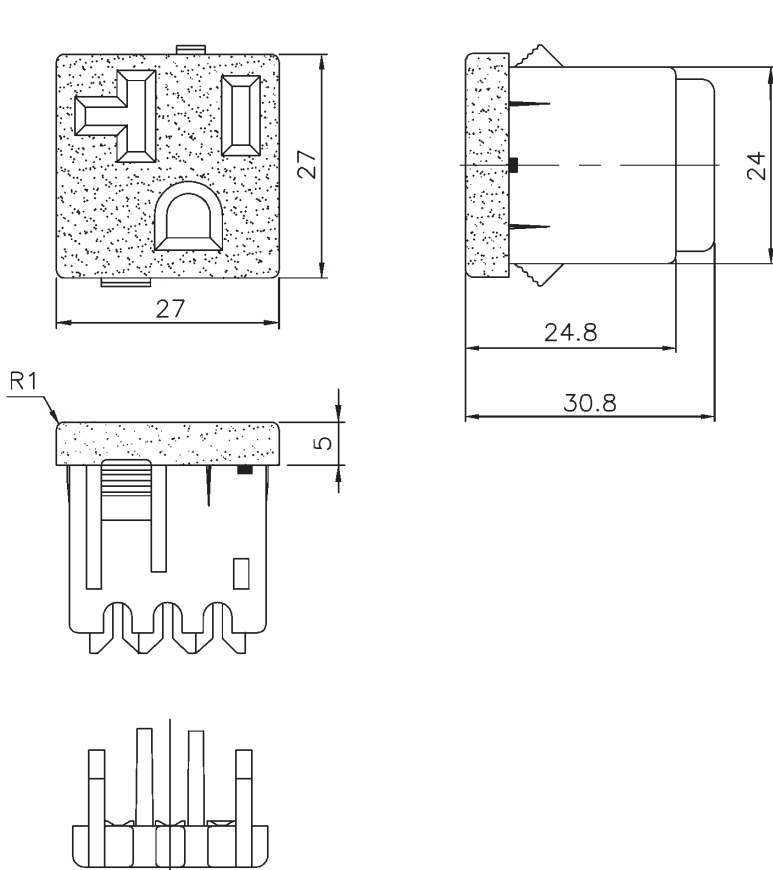


RECOMMENDED PANEL CUTOUT  
 RECOMMENDED TO USE 12&14 AWG  
 PANNEL THICKNESS 0.8~1.8mm

15A 125V AC  
 UL CSA

NOTE: PRODUCT SHIPPED UNASSEMBLED

## 739W-X2/03



PANEL CUTOUT

PANEL THICKNESS 0.8 ~ 1.8 mm  
 RECOMMENDED TO USE 12 AWG WIRE  
 ROHS Compliant

20A 125V AC UL&cUL  
 ROHS Compliant

NOTE: PRODUCT SHIPPED UNASSEMBLED

## 739W-X2/20