

Drive Isolation Transformers

Stress relief

We use strip conductors (above 7.5 KVA) instead of wire for a DIT series that easily accommodates the severe electrical and mechanical stresses found in today's AC & DC motor drives. The inherent excellent line isolation of these transformers is further enhanced with the extra protection of our Electrostatic Shield — free in all DIT's.

Lower losses

The harmonic currents generated by AC & DC drives increase eddy current losses (heat) in transformer windings. The thicker the winding conductor, the greater the losses. We use one turn per layer of thin strip conductor which provides lower eddy current losses than comparable wire wound units. Lower losses = cooler operation and longer transformer life.

Reduced short circuit forces

Strip windings minimize axial short circuit forces that can cause mechanical displacement of the windings under fault conditions. For extra protection all designs 7.5 KVA and above use primary and secondary coils of equal axial length. This feature tends to negate axial short circuit forces, further improving transformer life expectancy.

Selection instructions

If you know the motor horse-power, simply follow the drive system manufacturer's recommendation. Or, select the corresponding KVA from the chart at right.

For example, a 40 Hp motor requires a 51 KVA DIT.

FEATURES

- **UL Type 3R Enclosures with Weather Shield on Ventilated Units (above 20 KVA).** Type 2 Enclosure without weather shield. UL listed and CSA certified. 7.5 — 20.0 KVA are encapsulated, UL 3R.
- 3-Phase 60 Hertz.
- 180°C and 220°C insulation systems.



- Encapsulated and ventilated designs. All ventilated units, are of strip wound construction. Our reinforced core assemblies enhance quiet operation.
- Nominally 6% impedance.
- Designed for use with AC, adjustable frequency or DC drives.
- Full capacity taps are featured on all units. On 7.5 through 20 KVA units, taps are 1-5% ANFC and 1-5% BNFC. On 27 through 660 KVA units, taps are 2-2½% ANFC and 2-2½% BNFC.
- Full range of KVA ratings cover all standard drive systems.
- Ample wiring compartment for easy cable entry.
- Optional wall mounting brackets for certain sizes.

H.P.	KVA
5.0	7.5
7.5	11.0
10.0	14.0
15.0	20.0
20.0	27.0
25.0	34.0
30.0	40.0
40.0	51.0
50.0	63.0
60.0	75.0
75.0	93.0
100.0	118.0
125.0	145.0
150.0	175.0
200.0	220.0
250.0	275.0
300.0	330.0
400.0	440.0
500.0	550.0
600.0	660.0

SELECTION CHARTS



KVA	GROUP A		GROUP B			APPROX. SHIP WEIGHT Lbs. (Kg.)	TYPE MTG. W - Wall F - Floor	WEATHER SHIELD P/N	DESIGN FIGURE
	PRIMARY 460V Delta SECONDARY 230Y/133 CATALOG NO.	PRIMARY 460V Delta SECONDARY 460Y/266 CATALOG NO.	APPROX. DIMENSIONS ③ Inches (Cm.)						
	HEIGHT	WIDTH	DEPTH						
7.5	DTGA-7-2S or TS ④ (37)	DTGB-7-2S or TS ④ (34)	15.21 (38.6)	19.25 (48.9)	7.37 (18.7)	180 (81.6)	W	NA	F
11.0	DTGA-011-2S or TS ④ (37)	DTGB-011-2S or TS ④ (34)	18.86 (47.9)	20.30 (51.6)	9.03 (22.9)	265 (120.0)	F	NA	I
14.0	DTGA-014-2S or TS ④ (37)	DTGB-014-2S or TS ④ (34)	18.86 (47.9)	20.30 (51.6)	9.03 (22.9)	270 (123.0)	F	NA	I
20.0	DTGA-020-2S or TS ④ (37)	DTGB-020-2S or TS ④ (34)	20.77 (52.8)	20.94 (53.2)	10.18 (25.9)	435 (197.0)	F	NA	I
27.0	DTGA-027-4S (38)	DTGB-027-4S (35)	25.50 (64.8)	24.39 (61.9)	19.37 (49.2)	320 (145.0)	F ②	WS-A-1	E
34.0	DTGA-034-4S	DTGB-034-4S	25.50 (64.8)	24.39 (61.9)	19.37 (49.2)	340 (154.0)	F ②	WS-A-1	E
40.0	DTGA-040-4S	DTGB-040-4S	25.50 (64.8)	24.39 (61.9)	19.37 (49.2)	395 (179.0)	F ②	WS-A-1	E
51.0	DTGA-051-4S	DTGB-051-4S	29.90 (75.9)	28.15 (71.5)	22.37 (56.8)	400 (181.0)	F ②	WS-A-2	E
63.0	DTGA-063-4S	DTGB-063-4S	29.90 (75.9)	28.15 (71.5)	22.37 (56.8)	550 (250.0)	F ②	WS-A-2	E
75.0	DTGA-075-4S	DTGB-075-4S	29.90 (75.9)	28.15 (71.5)	22.37 (56.8)	570 (259.0)	F ②	WS-A-2	E
93.0	DTGA-093-4S	DTGB-093-4S	35.90 (91.2)	31.90 (81.0)	26.88 (68.3)	685 (311.0)	F	WS-A-3	E
118.0	DTGA-0118-4S	DTGB-0118-4S	35.90 (91.2)	31.90 (81.0)	26.88 (68.3)	765 (347.0)	F	WS-A-3	E
145.0	DTGA-0145-4S	DTGB-0145-4S	41.52 (105.5)	32.90 (83.6)	29.88 (75.9)	990 (449.0)	F	WS-A-4	E
175.0	DTGA-0175-4S	DTGB-0175-4S	41.52 (105.5)	32.90 (83.6)	29.88 (75.9)	1100 (499.0)	F	WS-A-4	E
220.0	DTGA-0220-4S	DTGB-0220-4S	41.52 (105.5)	32.90 (83.6)	29.88 (75.9)	1120 (508.0)	F	WS-A-4	E
275.0	DTGA-00275-4S	DTGB-00275-4S	45.60 (115.8)	39.50 (100.3)	35.50 (90.2)	2090 (948.0)	F	WS-A-5	E
330.0	DTGA-0330-4S ↓	DTGB-0330-4S ↓	45.60 (115.8)	39.50 (100.3)	35.50 (90.2)	2090 (948.0)	F	WS-A-5	G
440.0	DTGA-440-4S (39)	DTGB-440-4S (36)	62.00 (157.5)	54.00 (137.2)	42.00 (106.7)	2625 (1191.0)	F	WS-B-3	G
550.0	DTGA-550-4S	DTGB-550-4S	64.00 (162.6)	60.00 (152.4)	42.00 (106.7)	3000 (1361.0)	F	WS-B-4	G
660.0	DTGA-660-4S ↓	DTGB-660-4S ↓	64.00 (162.6)	64.00 (162.6)	42.00 (106.7)	3700 (1678.0)	F	WS-B-5	G

KVA	GROUP C		GROUP D			APPROX. SHIP WEIGHT Lbs. (Kg.)	TYPE MTG. W - Wall F - Floor	WEATHER SHIELD P/N	DESIGN FIGURE
	PRIMARY 575V Delta SECONDARY 230Y/133 CATALOG NO.	PRIMARY 575V Delta SECONDARY 460Y/266 CATALOG NO.	APPROX. DIMENSIONS ③ Inches (Cm.)						
	HEIGHT	WIDTH	DEPTH						
7.5	DTHA-7-2S or TS ④ (40)	DTHB-7-2S or TS ④ (43)	15.21 (38.6)	19.25 (48.9)	7.37 (18.7)	180 (81.6)	W	NA	F
11.0	DTHA-011-2S or TS ④ (40)	DTHB-011-2S or TS ④ (43)	18.86 (47.9)	20.30 (51.6)	9.03 (22.9)	265 (120.0)	F	NA	I
14.0	DTHA-014-2S or TS ④ (40)	DTHB-014-2S or TS ④ (43)	18.86 (47.9)	20.30 (51.6)	9.03 (22.9)	270 (123.0)	F	NA	I
20.0	DTHA-020-2S or TS ④ (40)	DTHB-020-2S or TS ④ (43)	20.77 (52.8)	20.94 (53.2)	10.18 (25.9)	435 (197.0)	F	NA	I
27.0	DTHA-027-4S (41)	DTHB-027-4S (44)	25.50 (64.8)	24.39 (61.9)	19.37 (49.2)	320 (145.0)	F ②	WS-A-1	E
34.0	DTHA-034-4S	DTHB-034-4S	25.50 (64.8)	24.39 (61.9)	19.37 (49.2)	340 (154.0)	F ②	WS-A-1	E
40.0	DTHA-040-4S	DTHB-040-4S	25.50 (64.8)	24.39 (61.9)	19.37 (49.2)	395 (179.0)	F ②	WS-A-1	E
51.0	DTHA-051-4S	DTHB-051-4S	29.90 (75.9)	28.15 (71.5)	22.37 (56.8)	400 (181.0)	F ②	WS-A-2	E
63.0	DTHA-063-4S	DTHB-063-4S	29.90 (75.9)	28.15 (71.5)	22.37 (56.8)	550 (250.0)	F ②	WS-A-2	E
75.0	DTHA-075-4S	DTHB-075-4S	29.90 (75.9)	28.15 (71.5)	22.37 (56.8)	570 (259.0)	F ②	WS-A-2	E
93.0	DTHA-093-4S	DTHB-093-4S	35.90 (91.2)	31.90 (81.0)	26.88 (68.3)	685 (311.0)	F	WS-A-3	E
118.0	DTHA-0118-4S	DTHB-0118-4S	35.90 (91.2)	31.90 (81.0)	26.88 (68.3)	765 (347.0)	F	WS-A-3	E
145.0	DTHA-0145-4S	DTHB-0145-4S	41.52 (105.5)	32.90 (83.6)	29.88 (75.9)	990 (449.0)	F	WS-A-4	E
175.0	DTHA-0175-4S	DTHB-0175-4S	41.52 (105.5)	32.90 (83.6)	29.88 (75.9)	1100 (499.0)	F	WS-A-4	E
220.0	DTHA-0220-4S	DTHB-0220-4S	41.52 (105.5)	32.90 (83.6)	29.88 (75.9)	1120 (508.0)	F	WS-A-4	E
275.0	DTHA-00275-4S	DTHB-00275-4S	45.60 (115.8)	39.50 (100.3)	35.50 (90.2)	2090 (948.0)	F	WS-A-5	E
330.0	DTHA-0330-4S ↓	DTHB-0330-4S ↓	45.60 (115.8)	39.50 (100.3)	35.50 (90.2)	2090 (948.0)	F	WS-A-5	G
440.0	DTHA-440-4S (42)	DTHB-440-4S (45)	62.00 (157.5)	54.00 (137.2)	42.00 (106.7)	2625 (1191.0)	F	WS-B-3	G
550.0	DTHA-550-4S	DTHB-550-4S	64.00 (162.6)	60.00 (152.4)	42.00 (106.7)	3000 (1361.0)	F	WS-B-4	G
660.0	DTHA-660-4S ↓	DTHB-660-4S ↓	64.00 (162.6)	64.00 (162.6)	42.00 (106.7)	3700 (1678.0)	F	WS-B-5	G

① Optional wall mounting kits – part # PL 79911 refer to [Document 8005 11](#).

② Optional wall mounting kits – part # PL 79912 refer to [Document 8005 11](#).

③ Dimensions may change and are not to be used for detailed construction purposes. Please contact the factory for certified dimensional drawings.

④ For factory added thermal protection, 7.5 thru 20.0 KVA change suffix '-2S' to '-TS'.

The red () number following the catalog number is the electrical connection diagram number, refer to [Document 8005](#).

GROUP E



KVA	PRIMARY 230 Delta SECONDARY 230Y/133 CATALOG NO.	APPROX. DIMENSIONS N (Cm.)			APPROX. SHIP WEIGHT Lbs. (Kg.)	TYPE MTG. W – Wall F – Floor	KNOCKOUTS Inches (Cm.)	WEATHER SHIELD P/N	DESIGN FIGURE
		HEIGHT	WIDTH	DEPTH					
7.5	DTFA-7-2S (62)	15.21 (38.6)	19.25 (48.9)	7.37 (18.7)	180 (81.6)	W	NA	NA	F
11.0	DTFA-011-2S (62)	18.86 (48.0)	20.30 (51.6)	9.03 (22.9)	265 (120.0)	F	NA	NA	I
14.0	DTFA-014-2S	18.86 (48.0)	20.30 (51.6)	9.03 (22.9)	265 (120.0)	F	NA	NA	I
20.0	DTFA-020-2S	20.77 (52.8)	20.94 (53.2)	10.18 (25.9)	435 (197.0)	F	NA	NA	I
27.0	DTFA-027-4S (59)	25.48 (64.8)	24.39 (62.0)	19.40 (49.3)	302 (137.0)	F ②	NA	WS-A-1	E
34.0	DTFA-034-4S	25.48 (64.8)	24.39 (62.0)	19.40 (49.3)	330 (150.0)	F ②	NA	WS-A-1	E
40.0	DTFA-040-4S	25.48 (64.8)	24.39 (62.0)	19.40 (49.3)	370 (168.0)	F ②	NA	WS-A-1	E
51.0	DTFA-051-4S	29.40 (74.7)	28.15 (71.5)	22.40 (56.9)	375 (170.0)	F ②	NA	WS-A-2	E
63.0	DTFA-063-4S	29.40 (74.7)	28.15 (71.5)	22.40 (56.9)	495 (225.0)	F ②	NA	WS-A-2	E
75.0	DTFA-075-4S	29.40 (74.7)	28.15 (71.5)	22.40 (56.9)	525 (238.0)	F ②	NA	WS-A-2	E
93.0	DTFA-093-4S	35.40 (89.9)	31.90 (81.0)	26.90 (68.3)	685 (311.0)	F	NA	WS-A-3	E
118.0	DTFA-0118-4S	35.40 (89.9)	31.90 (81.0)	26.90 (68.3)	710 (322.0)	F	NA	WS-A-3	E
145.0	DTFA-0145-4S	41.52 (105.5)	32.90 (83.6)	29.90 (75.9)	980 (445.0)	F	NA	WS-A-4	E
175.0	DTFA-0175-4S	41.52 (105.5)	32.90 (83.6)	29.90 (75.9)	1110 (504.0)	F	NA	WS-A-4	E
220.0	DTFA-0220-4S	41.52 (105.5)	32.90 (83.6)	29.90 (75.9)	1120 (508.0)	F	NA	WS-A-4	E

① Optional wall mounting kits – part # PL 79911 refer to [Document 8005 11](#).

② Optional wall mounting kits – part # PL 79912 refer to [Document 8005 11](#).

The red () number following the catalog number is the electrical connection diagram number, refer to [Document 8005](#).

To learn more about B-I-A please visit us at our
WEB site: www.BiaGmbH.com



For Information On The Following, Please Contact The Factory

1. Transformers rated primary 230 volts delta, secondary 460Y/266 volts.
2. Low temperature rise units using class 220°C insulation with either 115°C or 80°C rise operating temperature.
3. Totally enclosed non-ventilated units.

Windings, Terminations and Construction

KVA	PRIMARY WINDING	SECONDARY WINDING	INSULATION SYSTEM	TERMINATION	ENCLOSURE	CONSTRUCTION	CORE
7.5	CU wire	CU wire	180°C	CU wire	Epoxy encapsulated		Wound/distributed gap
11-20	AL foil	AL foil	180°C	CU wire	Epoxy encapsulated		Wound/distributed gap
27-220	AL foil	AL foil	220°C	CU bus	Ventilated		Wound/distributed gap
275-660	AL foil	AL foil	220°C	AL bus	Ventilated		Butt stacked/Step lap

Thermal Switch Kit - PL-79900

Thermal Switch Kits are designed for use with single and three phase drive isolation and distribution transformers. Thermal switch kits are available for a one or three sensor system.

Thermal sensors can be field or factory installed in the transformer winding ducts to detect abnormal temperatures. The thermal sensors are a normally closed contact that opens at 200°C ± 10°C and has a current capacity of 5 amps @ 120V or 2.5 amps @ 240V. This contact can activate any number of different types of alarms or mechanisms that could warn of a potential failure.

KVA	MOUNTING POSITION	ILLUSTRATION
27.0-118.0	Bottom of the case	Figure 1
145-750	Top flange of the core bracket	Figure 2

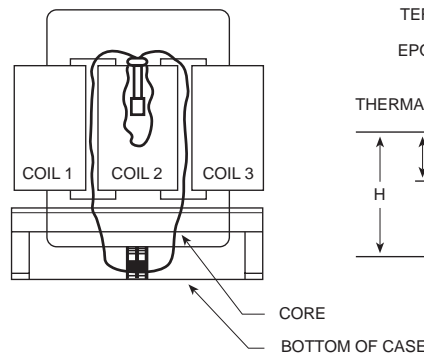


Figure 1

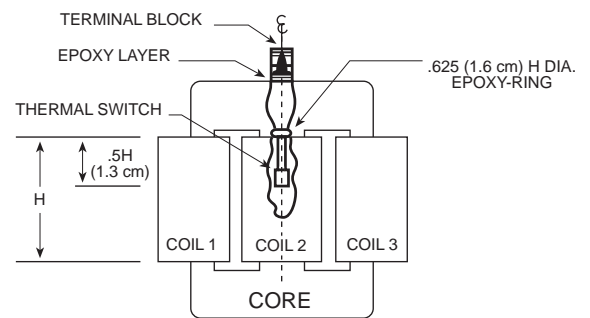


Figure 2

Advantages

Wound Cores and Strip Winding mean lower losses

All DITs above 7.5 KVA are wound with strip windings to ensure the lowest possible eddy current losses. All our DITs use a three leg wound core. This superior design has very low losses and quiet operation. Both of these features combine to significantly reduce losses and operating costs compared to other types of constructions.

Copper terminations provide trouble-free operation

All DITs up to and including 220 KVA have copper terminations. The transition

from aluminum strip coil conductors to copper terminations is accomplished by a bonding process known as "Koldwelding™."

This process has been used for over 25 years to provide a trouble-free, permanent bonding of the two metals.



Wound core construction showing all copper terminations

AC Line Reactors



Protect your sensitive equipment from harmful line disturbances with AC Line Reactors. AC Line Reactors help prevent equipment failure and downtime, and can add years to the life of your equipment.

Designed to protect DC motor drives, AC variable frequency drives and the motors they power. AC Line Reactors allow

to augment the Drive Isolation Transformer package to offer both line and load power quality protection for a wide range of applications.

Our product line features flexible design and ease of installation for use in a variety of applications such as paper machines, process lines, press controls and drive systems, along with tube mills and other sophisticated process equipment. These applications are found in such industries as food and beverage, paper, packaging systems and printing.

FEATURES

- Gapped iron core inductor—designed for optimum performance while providing harmonics compensation.
- Precision wound copper coils—maximum protection from short-circuiting.
- Finger-safe terminal blocks (up to 60 HP).
- Compact design—allows for more flexible installation.
- Amperage ratings of 2 to 600 amps

- Available in 3% and 5% impedance
- Can be used with 208, 240, 480 and 600 volts.
- Covered under famous 10-year limited warranty.
- UL and cUL Recognized.
- CE Marked (up to 55 amps)

BENEFITS

Protect your motors and motor drives from a variety of power conditioning problems while realizing the following benefits:

- Protection from damaging voltage drop.
- Elimination of nuisance tripping of drives or circuit breakers.
- Reduction of motor current surges and power line spike currents.
- Improvement in true power factor of capacitor input drives.
- Cooler, quieter operation.
- Reduction of harmonic distortion.
- Longer life for motors and solid state components.

Encapsulated AC Line Reactors

Encapsulated AC Line Reactors are designed to protect DC motor drives and AC variable frequency drives or motors—with one important difference. These line reactors are completely enclosed, so the unit can be mounted outside the control panel.

Ideal for applications such as process lines, paper machines, casters, tube mills, tire assembly, laminators, press controls and drive systems. Encapsulated AC Line Reactors immerse the core and coil assembly in an electrical grade silica and resin compound that seals out moisture and potential corrosives. These Line Reactors are housed in a NEMA 3R Enclosure suitable for indoor or outdoor applications. What's more, these encapsulated line reactors are extremely convenient to install. They can be floor or wall mounted and front access makes wiring easy.

FEATURES

- UL Type 3R enclosure.
- Available with stainless steel enclosure.

- Versatile mounting options to meet special application requirements.
- Large wiring compartment remains cool.
- No conduit or pull boxes needed.
- Front access to compartment simplifies wiring.
- Flexible copper leadwire terminates outside wiring compartment for quick connections.
- Dual-size knockouts in both sides and bottom of compartment for added flexibility in wiring.
- Ground studs for use with non-metallic conduit.
- UL and cUL Listed, CE Marked.
- Backed by 10-year limited warranty.

BENEFITS

- Completely enclosed design provides protection against corrosion and insulation deterioration in washdown and harsh environment.



- Easy to install and wire.
- Protects against a whole range of power conditioning problems.
- Eliminates motor failure due to poor power quality.
- Reduces downtime.
- Extends the life of your equipment.

GROUP B



480 VOLTS, 3% Z, 60 Hz (600 VOLTS, 2.4% Z; 240 VOLTS, 6% Z)

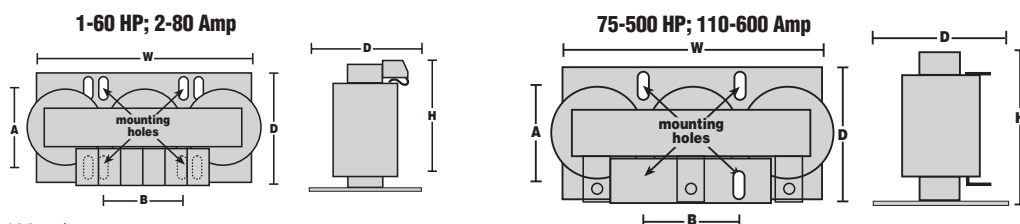
CATALOG NO.	MOTOR *		REACTOR AMP	uH	DIMENSIONS			MOUNTING DIMENSIONS		WEIGHT (Lbs/Kg)
	HP	AMP			H	W	D	A (Depth)	B (Width)	
ALRB-002TBC	1	2.1	2	11027	3.875 (9.8)	4.25 (10.8)	3.125 (7.90)	2.00 (5.1)	1.44 (3.7)	3 (1.4)
ALRB-003TBC	1.5	3	3	7351	3.875 (9.8)	4.25 (10.8)	3.125 (7.90)	2.00 (5.1)	1.44 (3.7)	3 (1.4)
ALRB-004TBC	2	3.4	4	5513	3.875 (9.8)	4.25 (10.8)	3.125 (7.90)	2.00 (5.1)	1.44 (3.7)	3 (1.4)
ALRB-006TBC	3	4.8	6	3676	3.875 (9.8)	4.25 (10.8)	3.125 (7.90)	2.00 (5.1)	1.44 (3.7)	3 (1.4)
ALRB-008TBC	5	7.6	8	2757	4.75 (12.1)	6.50 (16.5)	3.75 (9.50)	2.10 (5.3)	2.00 (5.1)	5 (2.3)
ALRB-012TBC	7.5	11	12	1838	4.75 (12.1)	6.50 (16.5)	3.75 (9.50)	2.10 (5.3)	2.00 (5.1)	6 (2.7)
ALRB-016TBC	10	14	16	1378	4.75 (12.1)	6.50 (16.5)	3.75 (9.50)	2.30 (5.8)	2.00 (5.1)	6 (2.7)
ALRB-025TBC	15	21	25	882	4.75 (12.1)	6.50 (16.5)	4.00 (10.2)	2.60 (6.6)	2.50 (6.4)	9 (4.1)
ALRB-027TBC	20	27	27	817	4.75 (12.1)	6.50 (16.5)	4.00 (10.2)	2.60 (6.6)	2.50 (6.4)	9 (4.1)
ALRB-035TBC	25	34	35	630	4.75 (12.1)	6.50 (16.5)	4.50 (11.4)	3.20 (8.1)	2.50 (6.4)	13 (5.9)
ALRB-045TBC	30	40	45	490	4.75 (12.1)	6.50 (16.5)	4.50 (11.4)	3.20 (8.1)	3.00 (7.6)	14 (6.4)
ALRB-055TBC	40	52	55	401	7.00 (17.8)	9.00 (22.9)	4.50 (11.4)	3.50 (8.9)	3.60 (9.1)	22 (10.0)
ALRB-080TBC	60	77	80	276	7.00 (17.8)	9.00 (22.9)	4.75 (12.1)	3.60 (9.1)	3.60 (9.1)	23 (10.4)
ALRB-110CBC	75	96	110	200	7.00 (17.8)	9.00 (22.9)	5.50 (14.0)	3.60 (9.1)	3.60 (9.1)	27 (12.2)
ALRB-130CBC	100	124	130	170	7.00 (17.8)	9.00 (22.9)	6.50 (16.5)	3.50 (8.9)	3.60 (9.1)	34 (15.4)
ALRB-160CBC	125	156	160	138	7.00 (17.8)	9.00 (22.9)	6.50 (16.5)	4.20 (10.7)	3.60 (9.1)	36 (16.3)
ALRB-200CBC	150	180	200	110	7.00 (17.8)	9.00 (22.9)	8.00 (20.3)	4.20 (10.7)	3.60 (9.1)	55 (24.9)
ALRB-250CBC	200	240	250	88	8.50 (21.6)	10.80 (27.4)	8.00 (20.3)	5.70 (14.5)	4.60 (11.7)	74 (33.6)
ALRB-300CBC	250	302	300	74	8.50 (21.6)	10.80 (27.4)	8.00 (20.3)	5.20 (13.2)	4.60 (11.7)	85 (38.6)
ALRB-360CBC	300	361	360	61	8.50 (21.6)	10.80 (27.4)	8.00 (20.3)	6.20 (15.2)	4.60 (11.7)	105 (47.6)
ALRB-420CBC	350	414	420	53	8.50 (21.6)	10.80 (27.4)	8.50 (21.6)	6.20 (15.2)	4.60 (11.7)	113 (51.3)
ALRB-480CBC	400	477	480	46	8.50 (21.6)	10.80 (27.4)	8.50 (21.6)	6.70 (17.0)	4.60 (11.7)	119 (54.0)
ALRB-600CBC	500	590	600	37	10.93 (27.8)	16.50 (41.9)	8.13 (20.7)	6.50 (16.5)	7.20 (18.3)	121 (54.9)

GROUP C

480 VOLTS, 5% Z, 60 Hz (600 VOLTS, 4% Z; 240 VOLTS, 10% Z)

CATALOG NO.	MOTOR *		REACTOR AMP	uH	DIMENSIONS			MOUNTING DIMENSIONS		WEIGHT (Lbs/Kg)
	HP	AMP			H	W	D	A (Depth)	B (Width)	
ALRC-002TBC	1	2.1	2	18378	3.875 (9.8)	4.25 (10.8)	3.125 (7.9)	2.00 (5.1)	1.44 (3.7)	3 (1.4)
ALRC-003TBC	1.5	3	3	12252	3.875 (9.8)	4.25 (10.8)	3.125 (7.9)	2.00 (5.1)	1.44 (3.7)	3 (1.4)
ALRC-004TBC	2	3.4	4	9189	3.875 (9.8)	4.25 (10.8)	3.125 (7.9)	2.10 (5.3)	1.44 (3.7)	4 (1.8)
ALRC-006TBC	3	4.8	6	6126	4.75 (12.1)	6.50 (16.5)	3.75 (9.5)	2.10 (5.3)	2.00 (5.1)	5 (2.3)
ALRC-008TBC	5	7.6	8	4594	4.75 (12.1)	6.50 (16.5)	3.75 (9.5)	2.10 (5.3)	2.00 (5.1)	6 (2.7)
ALRC-012TBC	7.5	11	12	3063	4.75 (12.1)	6.50 (16.5)	3.75 (9.5)	2.20 (5.6)	2.00 (5.1)	7 (3.2)
ALRC-016TBC	10	14	16	2297	4.75 (12.1)	6.50 (16.5)	4.00 (10.2)	2.60 (6.6)	2.00 (5.1)	9 (4.1)
ALRC-025TBC	15	21	25	1470	4.75 (12.1)	6.50 (16.5)	4.50 (11.4)	3.00 (7.6)	2.00 (5.1)	13 (5.9)
ALRC-027TBC	20	27	27	1361	4.75 (12.1)	6.50 (16.5)	4.50 (11.4)	2.80 (7.1)	3.00 (7.6)	13 (5.9)
ALRC-035TBC	25	34	35	1050	7.00 (17.8)	9.00 (22.9)	4.75 (12.1)	3.60 (9.1)	3.00 (7.6)	23 (10.4)
ALRC-045TBC	30	40	45	817	7.00 (17.8)	9.00 (22.9)	4.75 (12.1)	3.60 (9.1)	3.00 (7.6)	23 (10.4)
ALRC-055TBC	40	52	55	668	7.00 (17.8)	9.00 (22.9)	4.75 (12.1)	3.60 (9.1)	3.00 (7.6)	24 (10.9)
ALRC-080TBC	60	77	80	459	7.00 (17.8)	9.00 (22.9)	5.75 (14.6)	4.60 (11.7)	3.60 (9.1)	34 (15.4)
ALRC-110CBC	75	96	110	334	7.00 (17.8)	9.00 (22.9)	6.50 (16.5)	4.20 (10.7)	3.60 (9.1)	56 (25.4)
ALRC-130CBC	100	124	130	283	7.00 (17.8)	9.00 (22.9)	6.50 (16.5)	4.20 (10.7)	3.60 (9.1)	56 (25.4)
ALRC-160CBC	125	156	160	230	7.00 (17.8)	9.00 (22.9)	8.00 (20.3)	4.20 (10.7)	3.60 (9.1)	70 (31.8)
ALRC-200CBC	150	180	200	184	8.50 (21.6)	10.80 (27.4)	8.25 (21.0)	5.90 (15.0)	3.60 (9.1)	76 (34.5)
ALRC-250CBC	200	240	250	147	8.50 (21.6)	10.80 (27.4)	8.25 (21.0)	6.20 (15.7)	4.60 (11.7)	89 (40.4)
ALRC-300CBC	250	302	300	123	10.93 (27.8)	16.50 (41.9)	8.13 (20.7)	6.20 (15.7)	4.60 (11.7)	106 (48.1)
ALRC-360CBC	300	361	360	102	10.93 (27.8)	16.50 (41.9)	9.50 (24.1)	8.20 (20.8)	4.60 (11.7)	124 (56.2)
ALRC-420CBC	350	414	420	88	10.93 (27.8)	16.50 (41.9)	9.50 (24.1)	8.20 (20.8)	4.60 (11.7)	124 (56.2)
ALRC-480CBC	400	477	480	77	10.93 (27.8)	16.50 (41.9)	10.13 (25.7)	8.20 (20.8)	4.60 (11.7)	129 (58.5)
ALRC-600CBC	500	590	600	61	10.93 (27.8)	16.50 (41.9)	10.13 (25.7)	8.20 (20.8)	7.20 (18.3)	190 (86.2)

DIMENSIONS



* Motor HP and Amp rated at 480 volts.

GROUP B



ENCAPSULATED AC LINE REACTORS *

480 VOLTS, 3% Z, 60 Hz (600 VOLTS, 2.4% Z; 240 VOLTS, 6% Z)

CATALOG NO.	MOTOR **		REACTOR		DIMENSIONS			DIMENSIONAL DRAWINGS	WEIGHT (lbs/kg)
	HP	AMP	AMP	uH	H	W	D		
ALRB-002LWE	1	2.1	2	11027	9.68 (24.6)	4.75 (24.6)	4.5 (11.4)	A	10 (4.5)
ALRB-003LWE	1.5	3	3	7351	9.68 (24.6)	4.75 (24.6)	4.5 (11.4)	A	10 (4.5)
ALRB-004LWE	2	3.4	4	5513	9.68 (24.6)	4.75 (24.6)	4.5 (11.4)	A	10 (4.5)
ALRB-006LWE	3	4.8	6	3676	9.68 (24.6)	4.75 (24.6)	4.5 (11.4)	A	10 (4.5)
ALRB-008LWE	5	7.6	8	2757	11.5 (29.2)	10.31 (26.2)	7.13 (18.1)	B	24 (10.9)
ALRB-012LWE	7.5	11	12	1838	11.5 (29.2)	10.31 (26.2)	7.13 (18.1)	B	24 (10.9)
ALRB-016LWE	10	14	16	1378	11.5 (29.2)	10.31 (26.2)	7.13 (18.1)	B	25 (11.3)
ALRB-025LWE	15	21	25	882	11.5 (29.2)	10.31 (26.2)	7.13 (18.1)	B	28 (12.7)
ALRB-027LWE	20	27	27	817	11.5 (29.2)	10.31 (26.2)	7.13 (18.1)	B	28 (12.7)
ALRB-035LWE	25	34	35	630	11.5 (29.2)	10.31 (26.2)	7.13 (18.1)	B	32 (14.5)
ALRB-045LWE	30	40	45	490	11.5 (29.2)	10.31 (26.2)	7.13 (18.1)	B	33 (15.0)
ALRB-055LWE	40	52	55	401	11.83 (30.0)	14.17 (36.0)	8.82 (22.4)	C	73 (33.1)
ALRB-080LWE	60	77	80	276	11.83 (30.0)	14.17 (36.0)	8.82 (22.4)	C	75 (34.0)
ALRB-110LWE	75	96	110	200	11.83 (30.0)	14.17 (36.0)	8.82 (22.4)	C	78 (35.4)
ALRB-130LWE	100	124	130	170	11.83 (30.0)	14.17 (36.0)	8.82 (22.4)	C	85 (38.6)
ALRB-160LWE	125	156	160	138	11.83 (30.0)	14.17 (36.0)	8.82 (22.4)	C	87 (39.5)

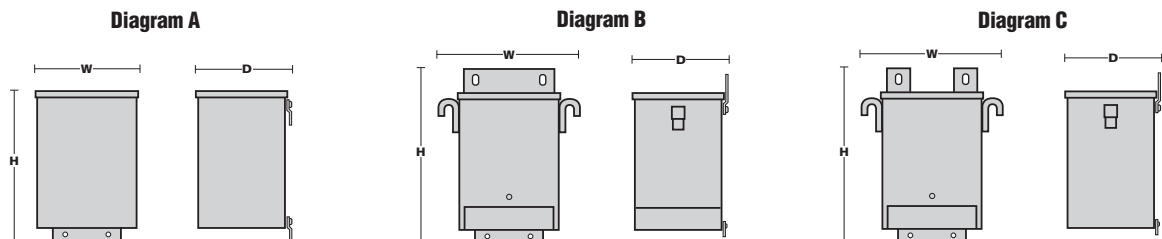
GROUP C

ENCAPSULATED AC LINE REACTORS *

480 VOLTS, 5% Z, 60 Hz (600 VOLTS, 4% Z; 240 VOLTS, 10% Z)

CATALOG NO.	MOTOR **		REACTOR		DIMENSIONS			DIMENSIONAL DRAWINGS	WEIGHT (lbs/kg)
	HP	AMP	AMP	uH	H	W	D		
ALRC-002LWE	1	2	2	18378	9.68 (24.6)	4.75 (24.6)	4.5 (11.4)	A	10 (4.5)
ALRC-003LWE	1.5	3	3	12252	9.68 (24.6)	4.75 (24.6)	4.5 (11.4)	A	10 (4.5)
ALRC-004LWE	2	4	4	9189	9.68 (24.6)	4.75 (24.6)	4.5 (11.4)	A	10 (4.5)
ALRC-006LWE	3	6	6	6126	11.5 (29.2)	10.31 (26.2)	7.13 (18.1)	B	24 (10.9)
ALRC-008LWE	5	8	8	4594	11.5 (29.2)	10.31 (26.2)	7.13 (18.1)	B	24 (10.9)
ALRC-012LWE	7.5	12	12	3063	11.5 (29.2)	10.31 (26.2)	7.13 (18.1)	B	26 (11.8)
ALRC-016LWE	10	16	16	2297	11.5 (29.2)	10.31 (26.2)	7.13 (18.1)	B	28 (12.7)
ALRC-025LWE	15	25	25	1470	11.5 (29.2)	10.31 (26.2)	7.13 (18.1)	B	32 (14.5)
ALRC-027LWE	20	27	27	1361	11.5 (29.2)	10.31 (26.2)	7.13 (18.1)	B	32 (14.5)
ALRC-035LWE	25	35	35	1050	11.83 (30.0)	14.17 (36.0)	8.82 (22.4)	C	74 (33.6)
ALRC-045LWE	30	45	45	817	11.83 (30.0)	14.17 (36.0)	8.82 (22.4)	C	75 (34.0)
ALRC-055LWE	40	55	55	668	11.83 (30.0)	14.17 (36.0)	8.82 (22.4)	C	75 (34.0)
ALRC-080LWE	60	80	80	459	11.83 (30.0)	14.17 (36.0)	8.82 (22.4)	C	85 (38.6)
ALRC-110LWE	75	110	110	334	11.83 (30.0)	14.17 (36.0)	8.82 (22.4)	C	107 (48.5)
ALRC-130LWE	100	130	130	263	11.83 (30.0)	14.17 (36.0)	8.82 (22.4)	C	107 (48.5)
ALRC-160LWE	125	160	160	230	11.83 (30.0)	14.17 (36.0)	8.82 (22.4)	C	121 (54.9)

DIMENSIONS



* All units are available with stainless steel enclosures—consult factory.

** Motor HP and Amp rated at 480 volts.