




Liquidtight Steel/Malleable Straight and 90 Degree Strain Relief Cord Connectors:

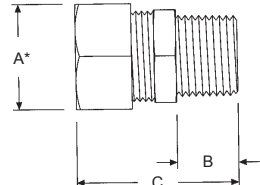
- For use in wet or dry locations to provide a liquidtight and strain relief termination for flexible cord and cable.
- These liquidtight strain relief cord connectors are suitable for use in Class 1, Division 2; Class 2, Division 1 and 2; and Class 3, Division 1 and 2 hazardous locations.



Document	Catalog No. / Katalog-Nr.	Hubs	Cable Ø	Thread Spec.	A*	B	C	D	Form	Weight/ea	VPE/Pack	U/M	EDP-No.
----------	---------------------------	------	---------	--------------	----	---	---	---	------	-----------	----------	-----	---------


Series 37xx NPT, Straight Cord Connectors, Steel/Malleable Iron

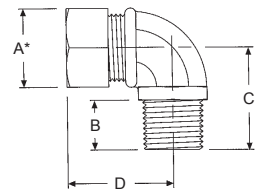
	3702-1 #	1/2"	3.2 - 6.4	1/2-14 NPT	27.0	15.1	36.5	---	F1	76g	25	ea	100778
	3702-2 #	1/2"	6.4 - 9.5	1/2-14 NPT	27.0	15.1	36.5	---	F1	75g	25	ea	100779
	3782-2 # **	1/2"	6.4 - 9.5	1/2-14 NPT	27.0	15.1	36.5	---	F1	73g	15/1	ea	114965
	3702-3	1/2"	9.5 - 10.8	1/2-14 NPT	27.0	15.1	36.5	---	F1	73g	25	ea	100780
	3702-4	1/2"	10.8 - 12.7	1/2-14 NPT	27.0	15.1	36.5	---	F1	82g	25	ea	100783
	3702-5 #	1/2"	9.5 - 12.7	1/2-14 NPT	30.2	15.1	36.5	---	F2	75g	25	ea	100786
	3782-5 # **	1/2"	9.5 - 12.7	1/2-14 NPT	30.2	15.1	36.5	---	F2	75g	15/1	ea	114554
	3702-6 #	1/2"	12.7 - 15.2	1/2-14 NPT	30.2	15.1	36.5	---	F2	68g	25	ea	100787
	3782-6 # **	1/2"	12.7 - 15.2	1/2-14 NPT	30.2	15.1	36.5	---	F2	68g	15/1	ea	114553
	3703-1	3/4"	6.4 - 9.5	3/4-14 NPT	34.9	15.1	39.7	---	F3	94g	25	ea	100788
	3703-2	3/4"	9.5 - 12.7	3/4-14 NPT	34.9	15.1	39.7	---	F3	93g	25	ea	100789
	3703-3 #	3/4"	12.7 - 15.2	3/4-14 NPT	34.9	15.1	39.7	---	F3	91g	25	ea	100790
	3703-4 #	3/4"	15.2 - 16.5	3/4-14 NPT	34.9	15.1	39.7	---	F3	85g	25	ea	100793
	3703-6	3/4"	16.5 - 17.8	3/4-14 NPT	34.9	15.1	39.7	---	F3	90g	25	ea	100797
	3703-5	3/4"	17.8 - 21.6	3/4-14 NPT	34.9	15.1	39.7	---	F3	85g	25	ea	100796
	3704-1	1"	15.2 - 17.8	1-11½ NPT	42.9	16.7	42.9	---	F4	149g	25	ea	100798
	3704-2	1"	17.8 - 21.6	1-11½ NPT	42.9	16.7	42.9	---	F4	144g	25	ea	100799
	3704-3	1"	21.6 - 25.4	1-11½ NPT	42.9	16.7	42.9	---	F4	155g	25	ea	100800
	3705-1	1-1/4"	21.6 - 25.4	1¼-11½ NPT	52.4	15.9	51.6	---	F5	244g	25	ea	100801
	3705-2	1-1/4"	25.4 - 31.8	1¼-11½ NPT	52.4	15.9	51.6	---	F5	235g	25	ea	100802
	3705-3	1-1/4"	31.8 - 35.6	1¼-11½ NPT	52.4	15.9	51.6	---	F5	227g	25	ea	100803
	3706-1	1-1/2"	25.4 - 31.8	1½-11½ NPT	60.3	15.9	56.4	---	F6	375g	10	ea	100804
	3706-2	1-1/2"	31.8 - 35.6	1½-11½ NPT	60.3	15.9	56.4	---	F6	366g	10	ea	100805



(*) A = indicates nut flats

Series 37xx NPT, 90° Cord Connectors, Malleable Iron

	3792-1	1/2"	3.2 - 6.4	1/2-14 NPT	27.0	15.1	33.3	36.5	F1	101g	25	ea	100819
	3792-2	1/2"	6.4 - 9.5	1/2-14 NPT	27.0	15.1	33.3	36.5	F1	99g	25	ea	100820
	3792-3	1/2"	9.5 - 10.8	1/2-14 NPT	27.0	15.1	33.3	36.5	F1	82g	25	ea	100821
	3792-4	1/2"	10.8 - 12.7	1/2-14 NPT	27.0	15.1	33.3	36.5	F1	98g	25	ea	100822
	3792-5	1/2"	9.5 - 12.7	1/2-14 NPT	30.2	15.1	33.3	36.5	F2	107g	25	ea	100823
	3792-6	1/2"	12.7 - 15.2	1/2-14 NPT	30.2	15.1	33.3	36.5	F2	101g	25	ea	100824
	3793-1	3/4"	6.4 - 9.5	3/4-14 NPT	34.9	15.1	36.5	41.3	F3	143g	10	ea	100825
	3793-2	3/4"	9.5 - 12.7	3/4-14 NPT	34.9	15.1	36.5	41.3	F3	153g	10	ea	100826
	3793-3	3/4"	12.7 - 15.2	3/4-14 NPT	34.9	15.1	36.5	41.3	F3	143g	10	ea	100827
	3793-4	3/4"	15.2 - 16.5	3/4-14 NPT	34.9	15.1	36.5	41.3	F3	173g	10	ea	100828
	3793-6	3/4"	16.5 - 17.8	3/4-14 NPT	34.9	15.1	36.5	41.3	F3	141g	10	ea	100830
	3793-5	3/4"	17.8 - 21.6	3/4-14 NPT	34.9	15.1	36.5	41.3	F3	139g	10	ea	100829
	3742-2 (45°)***	1/2"	6.4 - 9.5	1/2-14 NPT	27.0	15.1	---	---	F1	105g	25	ea	100807

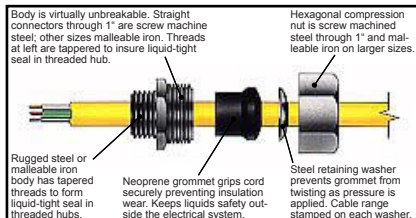


* A = indicates nut flats.

** These items are UPC-Labeled and individual packed.

*** If current stock is depleted, item will be discontinued.

CSA Certified - File # LR1082 - where marked with.



Product Features

- All steel/malleable construction provides mechanical strength.
- Screw machined bodies (straights through 1") and precision threaded malleable iron castings mate with other components perfectly, without strain or distortion.
- Unique neoprene grommet design - grommet is forced up and around the cord when the nut is tightened for a positive liquidtight seal every time.
- Washers have size range imprinted for identification - eliminates misidentifying inventory.
- Use optional locknuts and sealing washers (available on request) to complete a liquidtight installation on a sheet metal box or panel.
- All metallic components are zinc electro plated for corrosion protection.
- UL Listed - Standard 514B - File # E195973
- CSA Certified - File # LR1082 - where marked with "#"