

# Studded Power Feed Thru Terminal Blocks

## ST722 Family

Our Special Products is proud to introduce to the industry our new studded power feed thru terminal blocks.

These terminal blocks were designed for applications where power feed thru is necessary using standard double hole lugs with .625" spacing.

These terminal blocks are available in three mounting options (end mount, back mount, and slide-in mount) and are offered in various line lengths.

These terminal blocks lower cost by eliminating multiple components and assembly time. The terminal blocks are manufactured from top quality insulator and conductor materials. Designed with a robust one-piece insulator base using a one-piece conductor permanently assembled together.

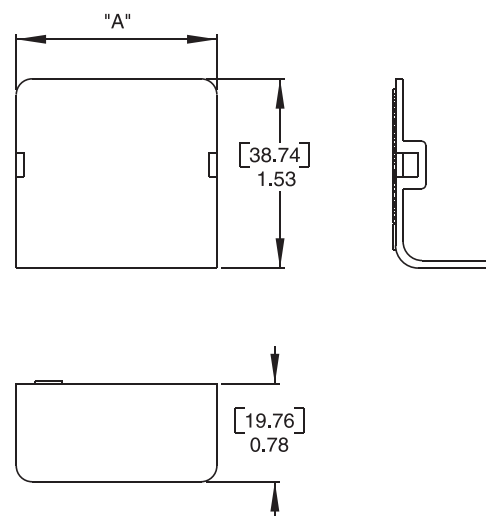
Offered with various hardware options (See Description Below).

Covers are molded using a one-piece design and are available as an option for all series of terminal blocks.

### Optional Cover Available:

- Cover is offered in 1 – 6 poles
- One cover accommodates all series
- Base, Thermoplastic
- Flammability UL 94 V-0

Catalog Number	Number of Poles	Dimensions A
C72201	1	0.91
C72202	2	1.64
C72203	3	2.37
C72204	4	3.10
C72205	5	3.83
C72206	6	4.56



Series	Mounting	Stud	Poles	Hardware
ST722		25 – 1/4" Stud	(Back Mount) 02 – 06 (Slide Mount) 01 – 04 (End Mount) 01 – 06	(blank) – No hardware UH – All nuts shipped bulk AH – All nuts assembled DL – Assembled barrier side, remainder shipped bulk

# Studded Power Feed Thru Terminal Blocks

## ST722B25 Series (back mount)

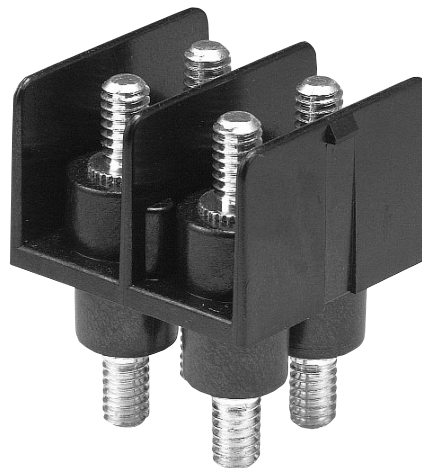
### Specifications:

#### Electrical:

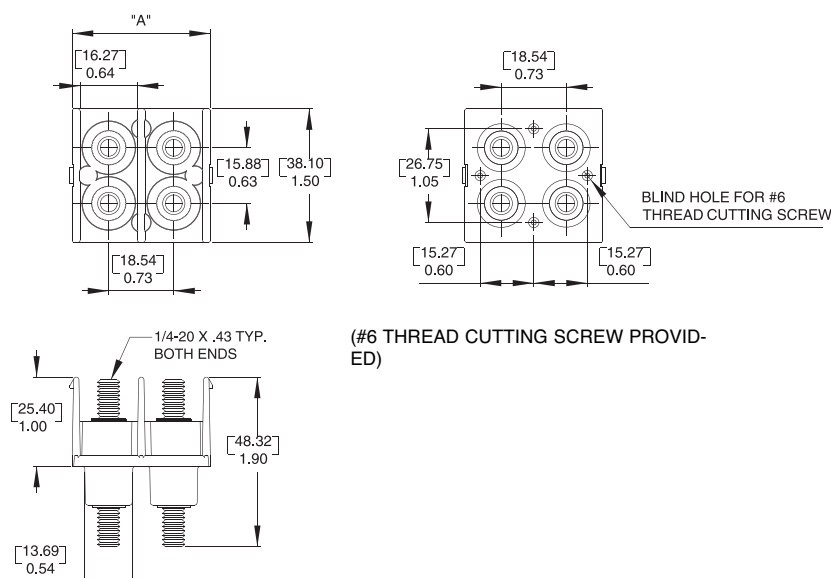
- 300 Volts (UL 1059 Class B and C)
- 175 Amps
- Wire Range #2/0 - #8
- (Accommodates Two Hole Compression Lugs on .625" Centers – wires #2 and larger may require narrow lugs)

#### General/Mechanical:

- Base, Thermoplastic, 125° C (UL RTI)
- Studs, 1/4 - 20 Brass, Tin Plated
- 2 – 6 Poles
- .73" Centers
- Application Torque 50 lb-in
- Inquire About Alternate Stud Sizes
- The Suitability of These Devices for Greater Currents Shall Be Determined in the End-Use Application
- UL Recognized File No. E62806
- CSA Certified File No. LR19766
- CE



Catalog Number	Number of Poles	Dimensions A
ST722B2502	2	1.55
ST722B2503	3	2.28
ST722B2504	4	3.01
ST722B2505	5	3.74
ST722B2506	6	4.47



# Studded Power Feed Thru Terminal Blocks

## ST722S25 Series (slide-in mount)

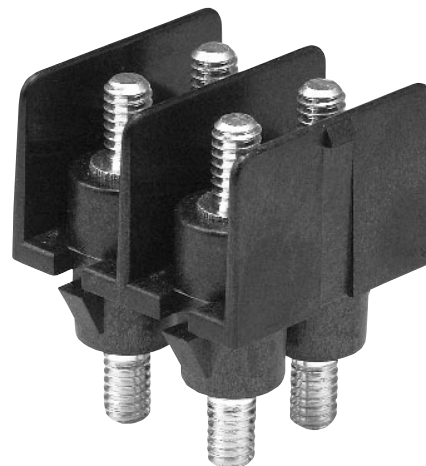
### Specifications:

#### Electrical:

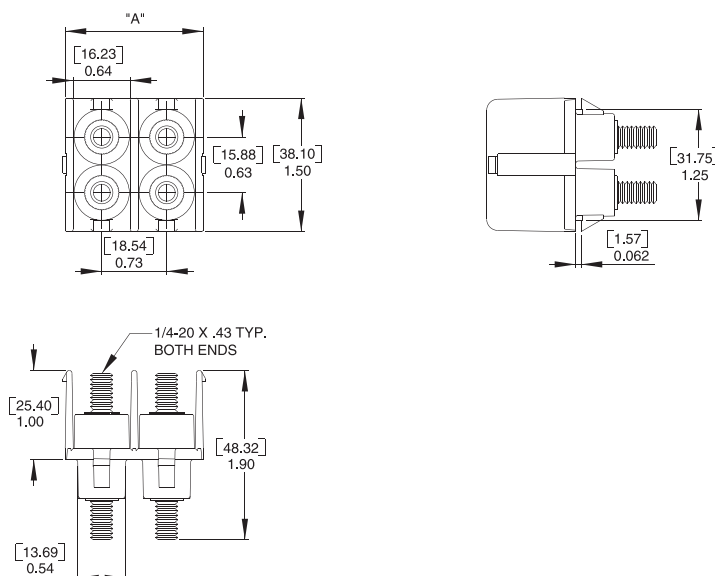
- 300 Volts (UL 1059 Class B and C)
- 175 Amps
- Wire Range #2/0 - #8
- (Accommodates Two Hole Compression Lugs on .625" Centers – wires #2 and larger may require narrow lugs)

#### General/Mechanical:

- Base, Thermoplastic, 125° C (UL RTI)
- Studs, 1/4 - 20 Brass, Tin Plated
- 1 – 4 Poles
- .73" Centers
- Application Torque 50 lb-in
- Inquire About Alternate Stud Sizes
- The Suitability of These Devices for Greater Currents Shall Be Determined in the End-Use Application
- UL Recognized File No. E62806
- CSA Certified File No. LR19766
- CE



Catalog #	Number of Poles	Dimensions A
ST722S2501	1	0.82
ST722S2502	2	1.55
ST722S2503	3	2.28
ST722S2504	4	3.01



# Studded Power Feed Thru Terminal Blocks

## ST722E25 Series (end mount)

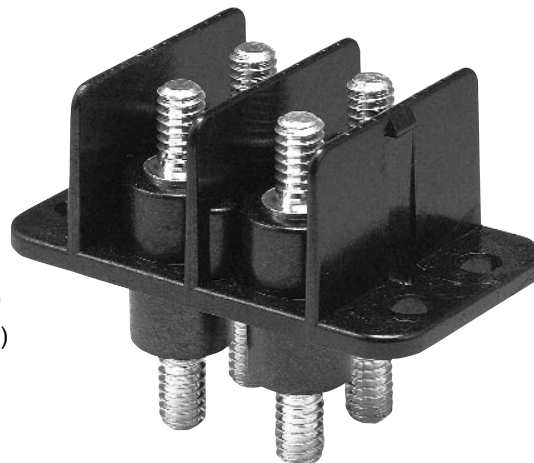
### Specifications:

#### Electrical:

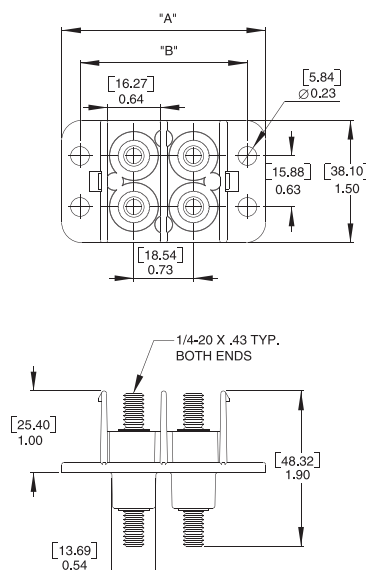
- 300 Volts (UL 1059 Class B and C)
- 175 Amps
- Wire Range #2/0 - #8
- (Accommodates Two Hole Compression Lugs on .625" Centers – wires #2 and larger may require narrow lugs)

#### General/Mechanical:

- Base, Thermoplastic, 125° C (UL RTI)
- Studs, 1/4 - 20 Brass, Tin Plated
- 1 – 6 Poles
- .73" Centers
- Application Torque 50 lb-in
- Inquire About Alternate Stud Sizes
- The Suitability of These Devices for Greater Currents Shall Be Determined in the End-Use Application
- UL Recognized File No. E62806
- CSA Certified File No. LR19766
- CE



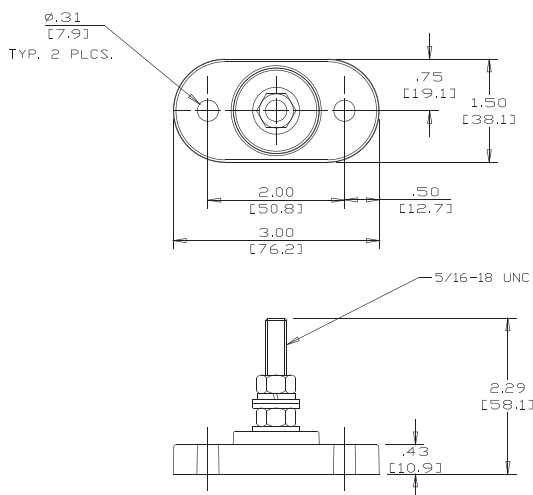
Catalog Number	Number of Poles	Dimensions A	Dimensions B
ST722E2501	1	1.77	1.32
ST722E2502	2	2.50	2.05
ST722E2503	3	3.23	2.78
ST722E2504	4	3.96	3.51
ST722E2505	5	4.69	4.24
ST722E2506	6	5.42	4.97



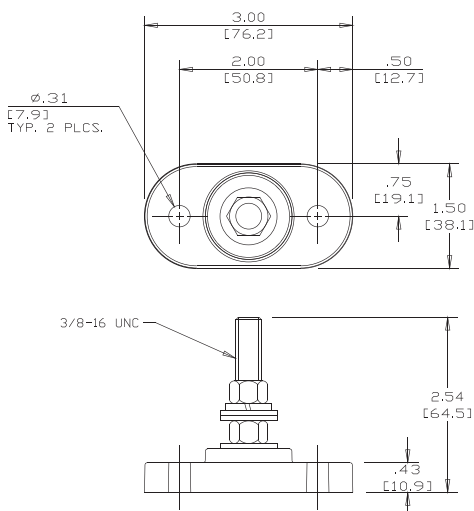
# Single Stud Connection Block

### Specifications:

- Base, Thermoplastic
- Temperature rating of 125° C (UL RTI)
- Hardware, Stainless Steel
- 300V
- Recommended Mounting Screw 1/4"
- Available with two stud sizes: 5/16" or 3/8"
- Designed for two or more wire lugs



**5/16" Stud**  
**Catalog# ST71031**



**3/8" Stud**  
**Catalog# ST71038**