

International - One-Way Industrial Adaptors

Phase Sequence Adaptors for Voltages > 50V - 50 Hz - IP44

made to special order only, non-stock or limited availability, please request sales office



Plug	Socket	Voltage		
3P+E - 16A - 9h	3P+E - 16A - 9h	200/250 V	10/50	6103444
3P+E - 16A - 6h	3P+E - 16A - 6h	380/415 V	10/50	6103646
3P+N+E - 16A - 6h	3P+N+E - 16A - 6h	346/415 V	10/50	6103747

- This device reverses the sequence of phases between the power supply and the rotating machine. It must be plugged in between the rotating machine plug and the power supply socket.

- Specially useful for temporary connection to the three-phase power supply of machines such as concrete mixers, small cranes, sanders, drills, circular saws, etc.

Current Adaptors from 32A to 16A for Voltages > 50V - 50 Hz - IP44

made to special order only, non-stock or limited availability, please request sales office



Plug	Socket	Voltage		
3P+E - 32A - 9h	3P+E - 16A - 9h	200/250 V	10/50	6103464
3P+E - 32A - 6h	3P+E - 16A - 6h	380/415 V	10/50	6103666

- Used to supply 16A loads with 3P + E plugs from 32A 3P + E power supply sockets.

- The adaptor's 32A plug is first plugged into the 32A power supply socket and then the 16A plug of the load to be supplied is plugged into the adaptor's 16A socket.

Configuration Adaptors from 3P + N + E to 3P + E for Voltages > 50V 50 Hz - IP44

made to special order only, non-stock or limited availability, please request sales office

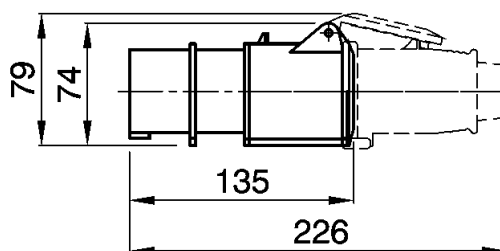


Plug	Socket	Voltage		
3P+N+E - 16A - 6h	3P+E - 16A - 6h	380/415 V	10/50	6103746

- Used to supply 16A loads with 3P+E plugs from 16A 3P+N+E power supply sockets.

- The adaptor's 16A 3P+N+E plug is first plugged into the 16A 3P+N+E power supply socket and then the 16A 3P + E plug of the load to be supplied is plugged into the adaptor's 16A 3P + E socket.

6103444



Technical Data are Subject to Change without Notice. Dimensions in mm.

International - One-Way Industrial Adaptors

With Domestic Plug - IP20

made to special order only, non-stock or limited availability, please request sales office



Domestic plug	Industrial socket				
French/German 2P+E - 16A - 250V~	IEC 309 2P+E - 16A - 250V~ - 6h	10/100	610379	610383	
Italian standard 2P+E - 16A - 250V~	IEC 309 2P+E - 16A - 250V~ - 6h	10/100			610384

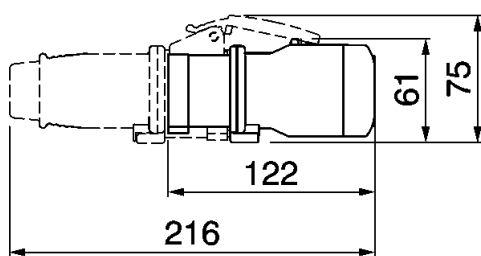
With Industrial Plug - IP20

made to special order only, non-stock or limited availability, please request sales office

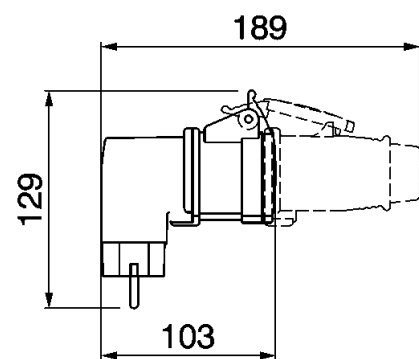


Industrial plug	Domestic socket				
IEC309 2P+E - 16A - 250V~ - 6h	Italian standard 2P+E-16A-Dual-use 250V~	10/100		610380	
IEC309 2P+E - 16A - 250V~ - 6h	Italian standard 22P+E-16A-Dual-use 250V~	10/100			610370

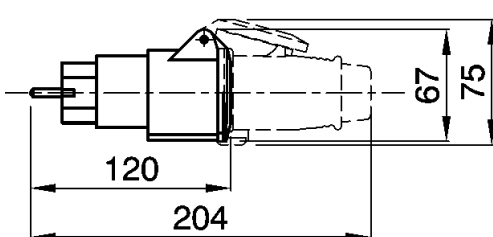
610370



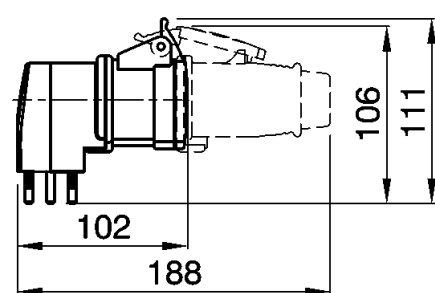
610379



610383



610384



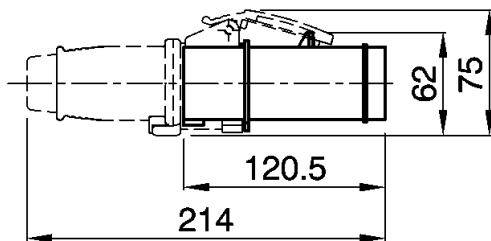
Technical Data are Subject to Change without Notice. Dimensions in mm.

International - One-Way Industrial Adaptors

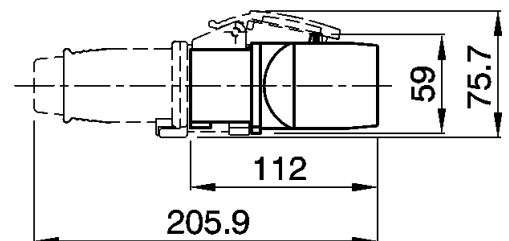
With Industrial Plug - IP20

						
Industrial plug	Domestic socket					
IEC309 2P+E - 16A - 250V~ - 6h	Italian standard P30 2P+E - 16A - 250V~	10/100		610382	610372	
	Italian German standard- pluristandard 2P+E - 16A - 250V~	10/100				610371
						
Industrial plug	Domestic socket					
IEC309 2P+E - 16A - 250V~ - 6h	German standard 2P+E - 16A - 250V~	10/100		610381	610373	
- Unshuttered contact tubes.						
						
Industrial plug	Domestic socket					
IEC309 2P+E - 16A - 250V~ - 6h	British standard 2P+E - 13A - 250V~	10/100		610385	610375	
	British standard 2P+E - 15A - 250V~	10/100				610376

610382



610385



Technical Data are Subject to Change without Notice. Dimensions in mm.

International - One-Way Industrial Adaptors

With Industrial Plug - IP20

made to special order only, non-stock or limited availability, please request sales office



Industrial plug	Domestic socket			
IEC309 2P+E - 16A - 250V~ - 6h	French standard 2P+E - 10/16A - 250V~	10/100		610391 610374



Industrial plug	Domestic socket			
IEC309 2P+E - 16A - 250V~ - 6h	Argentinian standard 2P+E - 10A - 250V~	10/100		610377

IEC309 2P+E - 16A - 250V~ - 6h	Argentinian standard 2P+E - 20A - 250V~	10/100		610378
-----------------------------------	--	--------	--	--------



Industrial plug	Domestic socket			
IEC309 2P+E - 16A - 250V~ - 6h	Italian standard 22P+E-16A-Dual-use-250V~	10/100	(▲)	610388
	Italian standard P30 12P+E - 16A - P30 - 250V~			

IEC309 2P+E - 16A - 250V~ - 6h	Italian standard 12P+E-16A-Dual-use-250V~	10/100		610390
	Italian standard P30 12P+E - 16A - P30 - 250V~			

(▲) Until stocks last.

AVAILABLE STANDARDS:

Dual-use socket 2P+E 16A 250V~ CEI 23-50 Shuttered socket Italian standard	German socket 2P+E 16A 250V~ VDE 0620 Unshuttered socket	British standard socket 2P+E 15A 250V~ BS 546 Shuttered socket
P30 Socket 2P+E 16A 250V~ CEI 23-50 Shuttered socket	French standard socket 2P+E 16A 250V~ NFC 61-303 Shuttered socket	Argentinian standard socket 2P+E 10A 250V~ Unshuttered socket
Pluristandard socket 2P+E 16A 250V~ Shuttered socket	British standard socket 2P+E 13A 250V~ BS 1363 Shuttered socket	Argentinian standard socket 2P+E 20A 250V~ Unshuttered socket

Technical Data are Subject to Change without Notice. Dimensions in mm.