

## RIGID AND IMC FITTINGS STEEL - REDUCING BUSHINGS


### Application

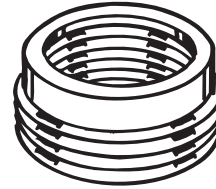
- For use with threaded rigid/IMC conduit to reduce the size of a female hub to accommodate a smaller size of conduit or male threaded hub

### Product Features

- Rugged steel construction insures mechanical protection of the raceway
- Zinc electro plated for corrosion protection

### Compliance

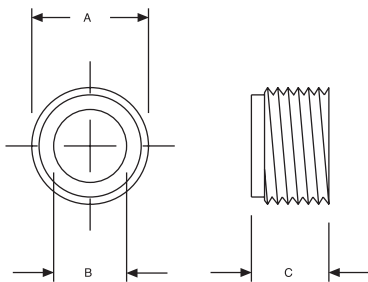
-  – Standard 514B



REDUCING BUSHINGS  
STEEL

## ORDERING INFORMATION - DIMENSIONS

REDUCING BUSHINGS - STEEL				
CATALOG NUMBER	TRADE SIZE	UNIT CTN. QTY.	SHIP CTN. QTY.	UPC BAR CODE
1141	1/2-3/8"	—	100	—
1142	3/4-1/2"	—	100	—
1143	1-1/2"	—	50	—
1144	1-3/4"	—	50	—
1145	1-1/4-1/2"	—	50	—
1146	1-1/4-3/4"	—	50	—
1147	1-1/4-1"	—	50	—
1148	1-1/2-1/2"	—	50	—
1149	1-1/2-3/4"	—	50	—
1150	1-1/2-1"	—	50	—
1151	1-1/2-1-1/4"	—	50	—
1152	2-1/2"	—	25	—
1153	2-3/4"	—	25	—
1154	2-1"	—	25	—
1155	2-1-1/4"	—	25	—
1156	2-1-1/2"	—	25	—



A = O.D./thread size  
B = Throat I.D./thread size  
C = Thickness

DIMENSIONS					
CATALOG NUMBER	A	THD. SPEC.	B	THD. SPEC.	C
1141	13/16"	1/2-14 NPS	1/2"	3/8-18 NPS	17/32"
1142	1-1/64"	3/4-14 NPS	39/64"	1/2-14 NPS	9/16"
1143	1-9/32"	1-11-1/2 NPS	39/64"	1/2-14 NPS	5/8"
1144	1-9/32"	1-11-1/2 NPS	13/16"	3/4-14 NPS	5/8"
1145	1-5/8"	1-1/4-11-1/2 NPS	39/64"	1/2-14 NPS	11/16"
1146	1-5/8"	1-1/4-11-1/2 NPS	13/16"	3/4-14 NPS	11/16"
1147	1-5/8"	1-1/4-11-1/2 NPS	1-3/64"	1-11-1/2 NPS	11/16"
1148	1-7/8"	1-1/2-11-1/2 NPS	39/64"	1/2-14 NPS	23/32"
1149	1-7/8"	1-1/2-11-1/2 NPS	13/16"	3/4-14 NPS	23/32"
1150	1-7/8"	1-1/2-11-1/2 NPS	1-3/64"	1-11-1/2 NPS	23/32"
1151	1-7/8"	1-1/2-11-1/2 NPS	1-11/32"	1-1/4-11-1/2 NPS	23/32"
1152	2-21/64"	2-11-1/2 NPS	39/64"	1/2-14 NPS	27/32"
1153	2-21/64"	2-11-1/2 NPS	1-13/16"	3/4-14 NPS	27/32"
1154	2-21/64"	2-11-1/2 NPS	1-3/64"	1-11-1/2 NPS	27/32"
1155	2-21/64"	2-11-1/2 NPS	1-11/32"	1-1/4-11-1/2 NPS	27/32"
1156	2-21/64"	2-11-1/2 NPS	1-19/32"	1-1/2-11-1/2 NPS	27/32"