

RIGID AND IMC FITTINGS STEEL/MALLEABLE IRON - INSULATED GROUNDING BUSHINGS

Application

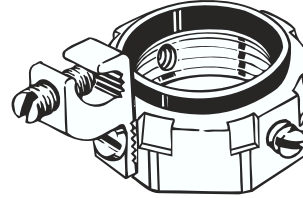
- For use on threaded rigid/IMC conduit to provide a means of grounding conduit through an insulated bushing

Product Features

- Lay-in lug style provides an easy means of inserting a ground wire
- Dual rated aluminum grounding lugs may be used with copper or aluminum grounding conductors
- Insuliner temperature rated at 105° C
- Steel/malleable construction insures mechanical protection for the raceway
- Zinc electro plated for corrosion protection

Compliance

- UL – Standard 514B



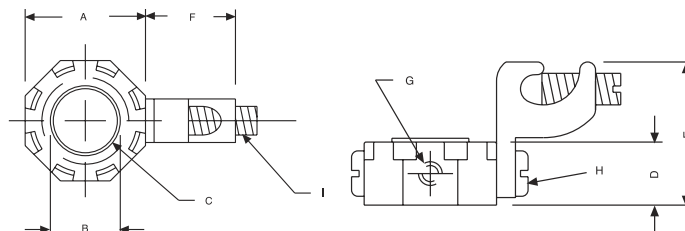
**INSULATED GROUNDING BUSHINGS – LAY-IN LUG
STEEL/MALLEABLE IRON**

ORDERING INFORMATION - DIMENSIONS

INSULATED GROUNDING BUSHINGS – LAY-IN LUG STEEL - MALLEABLE IRON						
CATALOG NUMBER	TRADE SIZE	UNIT CTN. QTY.	SHIP CTN. QTY.	GROUNDING WIRE CAPACITY		UPC BAR CODE
				MIN.	MAX.	
1212	1/2"	—	100	#14 Sol.	#4 Str.	—
1213	3/4"	—	100	#14 Sol.	#4 Str.	—
1214	1"	—	50	#14 Sol.	#4 Str.	—
1215	1-1/4"	—	25	#14 Sol.	#4 Str.	—
1216	1-1/2"	—	25	#14 Sol.	#4 Str.	—
1218	2"	—	10	#14 Sol.	#4 Str.	—
1290	2-1/2"	—	10	#14 Sol.	#1/0 Str.	—
1292	3"	—	5	#14 Sol.	#1/0 Str.	—
1294	3-1/2"	—	5	#6 Str.	#250 MCM	—
1296	4"	—	5	#6 Str.	#250 MCM	—

DIMENSIONS

CATALOG NUMBER	A	B	C THD. SPEC.	D	E	F	G	H	I
1212	1-1/8"	9/16"	1/2-14 NPS	17/32"	1-1/16"	3/8"	10-32 x 1/4" Set Screw	10-32 x 1/4" Pan Head Screw	1/4-28 x 5/8" Set Screw
1213	1-11/32"	3/4"	3/4-14 NPS	17/32"	1-1/16"	3/8"	10-32 x 1/4" Set Screw	10-32 x 1/4" Pan Head Screw	1/4-28 x 5/8" Set Screw
1214	1-11/16"	31/32"	1-11-1/2 NPS	17/32"	1-1/16"	3/8"	10-32 x 1/4" Set Screw	10-32 x 1/4" Pan Head Screw	1/4-28 x 5/8" Set Screw
1215	2-1/8"	1-1/4"	1-1/4-11-1/2 NPS	37/64"	1-1/16"	3/8"	10-32 x 1/4" Set Screw	10-32 x 1/4" Pan Head Screw	1/4-28 x 5/8" Set Screw
1216	2-3/8"	1-15/32"	1-1/2-11-1/2 NPS	37/64"	1-1/16"	3/8"	10-32 x 1/4" Set Screw	10-32 x 1/4" Pan Head Screw	1/4-28 x 5/8" Set Screw
1218	2-7/8"	1-31/32"	2-11-1/2 NPS	45/64"	1-1/16"	3/8"	10-32 x 1/4" Set Screw	10-32 x 1/4" Pan Head Screw	1/4-28 x 5/8" Set Screw
1290	3-1/4"	2-23/64"	2-1/2-8 NPS	27/32"	1-1/2"	19/32"	10-32 x 5/16" Set Screw	1/4-20 x 3/8" Pan Head Screw	3/8-24 x 7/8" Set Screw
1292	3-7/8"	2-59/64"	3-8 NPS	27/32"	1-1/2"	19/32"	10-32 x 5/16" Set Screw	1/4-20 x 3/8" Pan Head Screw	3/8-24 x 7/8" Set Screw
1294	4-1/2"	3-3/8"	3-1/2-8 NPS	1"	2-13/64"	51/64"	5/16-24 x 3/8" Set Screw	5/16-24 x 17/32" Pan Head Screw	9/16-18 x 1-1/4" Set Screw
1296	5-1/8"	3-27/32"	4-8 NPS	1-1/32"	2-13/64"	51/64"	5/16-24 x 7/16" Set Screw	5/16-24 x 17/32" Pan Head Screw	9/16 18 x 1-1/4" Set Screw



A = O.D. across corners
 B = I.D.
 C = Thread size
 D = Thickness
 E = Height of lug
 F = Width of lug
 G = Screw spec, bonding screw
 H = Screw spec, screw that holds lug to bushing
 I = Screw spec, screw that holds ground wire