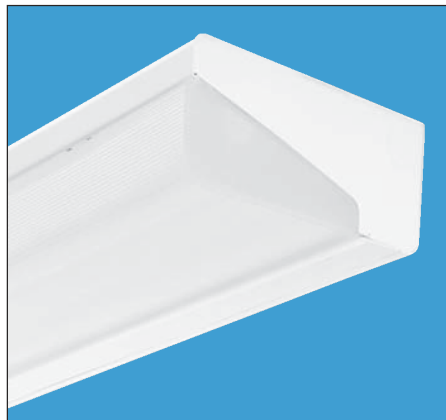


Wall Brackets

WP



Commercial Wall Brackets

Intended Use

For applications that require a contemporary, low-profile appearance. Ideal for stairwells, restrooms, patient care lobbies or corridors.

Features

Available in 2', 3' or 4' length with one or two lamps in cross-section.

All fabricated components of 20-gauge CRS. All metal parts finished with electrostatically deposited, thermally set polyester powder paint after fabrication

Proprietary, snap-in diffuser of tinted 50% DR acrylic with prismatic pattern.

Direct or direct/indirect distribution available.

Detachable, hinged electrical service tray for easy installation and maintenance. No tools required for relamping.

Fluorescent and incandescent night-light capabilities.

Through-wire/row-mount capabilities.

Standard finish post-paint, gloss-white enamel on all metal parts. Architectural black, 40% gloss post-paint available as an option.

Listings – UL Listed (standard). CSA Certified (see Options).

Ordering Information

Example: **WP 2 32 120 GEB DO CO**

Series	Number of lamps	Lamp type
WP	1,2 Not included.	17 17W T8 (24") 20 20W T12 (24") 25 25W T8 (36") 30 30W T12 (36") 32 32W T8 (48") 40 40W T12 (48")

Shielding type ¹
(blank) #12 pattern inverted, .125" thick acrylic, upright
ACF125 Matte white flat acrylic, .125" thick, upright ²
PCL12125V #12 pattern inverted, .125" thick polycarbonate, upright ²

Voltage
120
277
347
MOVOLT*
Others available.
* 120-277V. Must specify GEB10IS.

Accessories (Order separately)

U4220 Hex-base driver bit, Torx TX20, for tamper-resistant screws with center pin

Availability and Dimensions					
Series	Number of lamps	Lamp type	Width in. (cm)	Depth in. (cm)	Length in. (cm)
WP	1, 2	17, 20	7 ³ / ₈ (18.7)	3 ¹ / ₄ (8.26)	24 ⁷ / ₁₆ (62.1)
WP	1, 2	25, 30	7 ³ / ₈ (18.7)	3 ¹ / ₄ (8.26)	36 ⁷ / ₁₆ (92.6)
WP	1, 2	32, 40	7 ³ / ₈ (18.7)	3 ¹ / ₄ (8.26)	48 ⁷ / ₁₆ (123.0)

NOTES:

- 1 Supplied with standard high-impact acrylic lower diffuser.
- 2 Not available with **DO** option.
- 3 120V.
- 4 Requires **BF** option.
- 5 Requires **2/1** option for 2-lamp fixtures.

Options	
S1	Left-mounted on/off pull-switch (all lamps) ³
S2	Left-mounted on/off pull-switch for downlight, remote upright switching ^{3,4,5}
S4	Left-mounted 4-position pull-switch (front only, rear only, all on, all off) ^{3,4,5}
BF	Internal baffle to divide upright and downlight ²
SWR	Rocker switch, bottom right ³
CO	Grounded convenience outlet, right-mounted
MB	Architectural matte black finish
GLR	Internal fast-blow fuse
GMF	Internal slow-blow fuse
RIF1	Radio interference filter (one per fixture)
GEB	Electronic ballast, ≤20% THD
GEB10IS	T8 electronic ballast, ≤10% THD, instant start
GEB10RS	T8 electronic ballast, ≤10% THD, rapid start
2/1	Two 1-lamp ballasts
TPS	Tamperproof screw
NLCF	Compact fluorescent night light available. Must consult factory.
DO	Downlight only; solid-top metal housing
ES	Energy-saving ballast
CSA	CSA Certified