

Enclosed Fiberglass

DMW

**Intended Use**

For low to medium mounting heights and harsh environments where dust, dirt, humidity or moisture is present. Ideal for canopies, shipping docks, refrigerated areas and other non-hazardous environments. **Certain airborne contaminants can diminish integrity of acrylic. Refer to Acrylic Environmental Compatibility tables on pages 794-795 for suitable uses.**

Construction

Impact-resistant, UV-stabilized, reinforced polyester fiberglass housing. Shatter-resistant, high-impact 50% DR acrylic diffuser standard. Poured-in gasketing provides a continuous seal between housing and diffuser. Captive, corrosion-resistant, cam-action latches secure the diffuser. Stainless steel (STSL) latches also are available.

Electrical

Ballast: Thermally protected, resetting, Class P, HPF, non-

PCB, CSA Certified ballast is standard. Sound rating depends on lamp/ballast combination.

Electrical: AWM, TFN or THHN wire used throughout, rated for required temperatures.

Installation

Installation: For unit or row installations, surface (ceiling or wall) or suspended mounting. Surface mount bracket included (two per 4' unit, four per 8' unit).

Listings

120V, 277V and MVOLT are UL Listed and CSA Certified (standard). See Options for 347V and NOM Certified. NSF splash-zone certified and/or meets FDA/USDA guidelines. For more NSF information, see page 793. Listed for 25°C ambient temperature. DMW is wet-location listed for covered-ceiling applications. IP65 rated. Optional IP67 rating available for 4' units only.

**ORDERING INFORMATION**

For shortest lead times, configure products using **bolded options**.

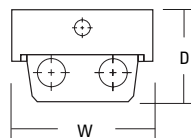
Example: DMW 2 32 MVOLT GEB10IS

Series	Number of lamps ¹	Lamp type	Lens	Voltage	Ballast configuration
DMW Wet location For tandem double-length unit, add prefix T. Example: TDMW	1	28T5 28W T5 (46")	(blank) High-impact acrylic, 50% DR ARDP Deep high-impact acrylic, 50% DR ³	MVOLT 120	(blank) Standard configuration
	2	32 32W T8 (48")		277	1/3 One 3-lamp ballast
	3 Not included.	96T8 59W T8 slimline (96")		347	1/4 One 4-lamp ballast
		48HO 60W T12 800mA (48")			
		48T8HO 44W T8HO (48")			
		96HO 110W T12 800mA (96")			
		96T8HO 86W T8 380mA (96")			
	54T5HO 54W T5HO (46") ²				
Ballast		Options			
GEB10IS	T8 electronic ballast, ≤10% THD, instant start	BCD	Mounting bracket to chain hang DMW (2 per package, excludes chain) ^{5,6}		
GEB10RS	T8 electronic ballast, ≤10% THD, programmed rapid start	HC36	Wire hook and 36" chain set (2 per package) ^{5,6}		
GEB10PS	T5 and T8HO electronic ballast, ≤10% THD, programmed rapid start	MSI	Wet location occupancy sensor pre-wired ⁴		
GEB10PS90	T5HO 90° electronic ballast, ≤10% THD, programmed rapid start	IP67	IP67 rated, requires 8 latches		
GEB	T12 electronic ballast, ≤20% THD ⁴	STSL	Stainless steel latches		
		WLF	Field-installable wet location fittings to stem-hang DMW on 1/2" rigid conduit (2 per package). For factory-installed fittings on top, order WLF as an option. ⁶		
		CSA	Meets Canadian standards (347V only)		
		NOM	Meets Mexican standards		

ADDITIONAL INFORMATION

CONFIGURATIONS						
SERIES	LAMPS PER CROSS SECTION	LAMPS PER FIXTURE	LAMP TYPE	WIDTH	DEPTH	LENGTH
DMW	1, 2, 3	1, 2, 3	28T5, 32	7-5/8 (19.4)	4-3/4 (12.1)	50 (127.0)
DMW	1, 2	1, 2	54T5HO	7-5/8 (19.4)	4-3/4 (12.1)	50 (127.0)
DMW (ARDP)	1, 2, 3	1, 2, 3	28T5, 32	7-5/8 (19.4)	5-5/8 (14.3)	50 (127.0)
DMW (ARDP)	1, 2	1, 2	54T5HO	7-5/8 (19.4)	5-5/8 (14.3)	50 (127.0)
DMW	2	2	48T8HO	7-5/8 (19.4)	5-5/8 (14.3)	50 (127.0)
DMW	1, 2	1, 2	48HO	7-5/8 (19.4)	5-5/8 (14.3)	50 (127.0)
DMW	1, 2	1, 2	96HO, 96T8, 96T8HO	7-5/8 (19.4)	5-5/8 (14.3)	98 (248.9)
TDMW	1, 2	2, 4	28T5, 48HO, 54T5HO	7-5/8 (19.4)	5-5/8 (14.3)	98 (248.9)
TDMW	1, 2, 3	2, 4, 6	32	7-5/8 (19.4)	5-5/8 (14.3)	98 (248.9)

Drawings are for dimensional detail only and may not represent actual mechanical configuration. Dimensions are shown in inches (centimeters) unless otherwise noted.

**Notes**

- See Configurations table for lamp compatibility.
- Must use GEB10PS90 ballast.
- Deep lens is standard on 4' 48HO and 48T8HO, and on all 8' fixtures. To match deep appearance on all other 4' units, order ARDP lens.
- Must specify voltage.
- For stainless steel, specify STS (example: BCD STS).
- Order accessories as separate catalog numbers.