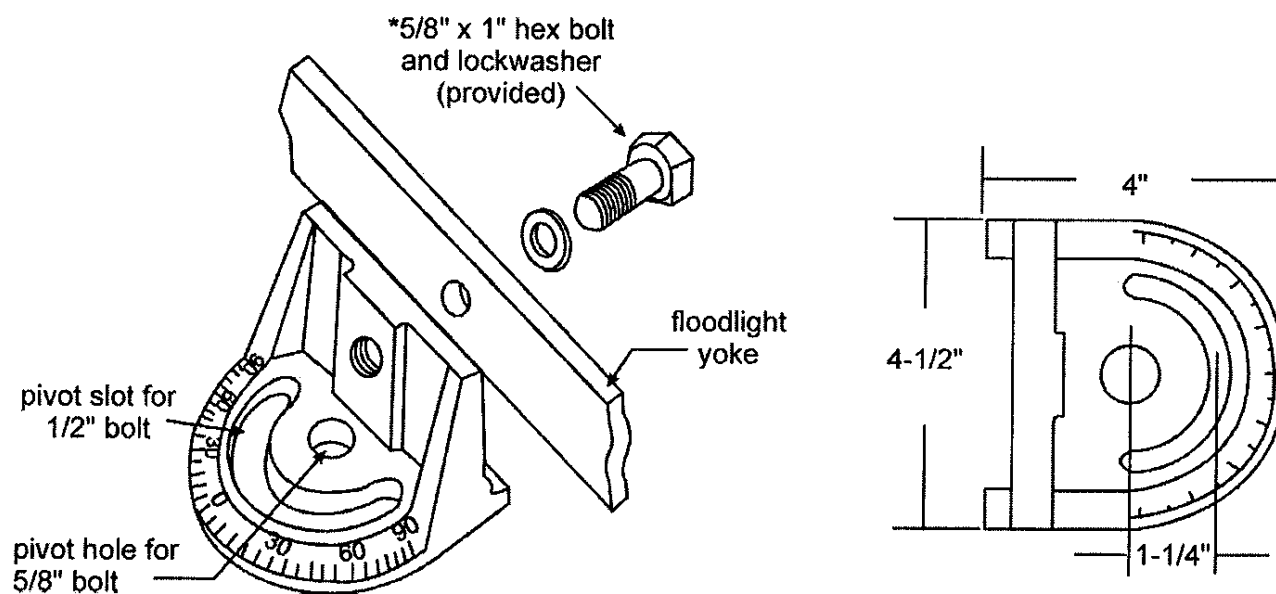


FCRA

Description: Cross-arm Adapter

Installation: Secure the FCRA to the cross-arm with a 5/8" bolt (not provided). Secure the yoke to the FCRA by using the bolt and lockwasher provided.

WARNING: Options are to be installed in the field. **DO NOT** alter fittings when installing accessories for mounting the fixtures. Recheck all connections and bolts to insure they will not loosen due to vibration.



**When using with TFM series yoke mounted luminaire, a 3/8" bolt, (2) lockwashers and nut must be used in place of 5/8" bolt and lockwasher that is provided. Due to yoke design, the TFM will be off center when mounted.*

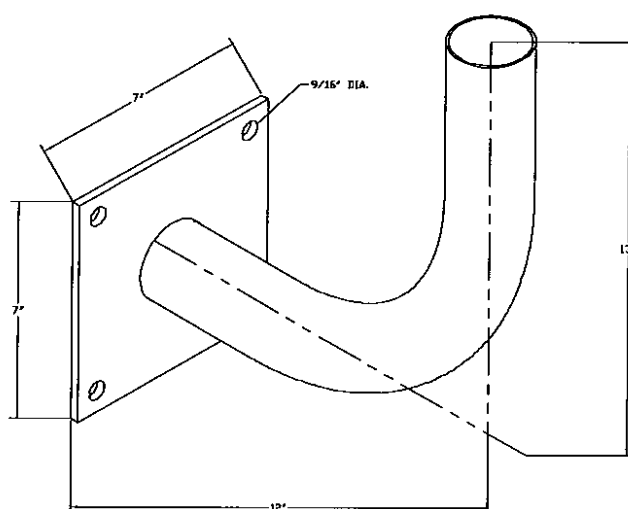
Dimensions and specifications on this page are based on the most current available data and are subject to change without notice.

FRWB

Description: Radius Wall Bracket, DDB standard. Optional Colors Available.

Installation: Secure the FRWB to surface with (4) ½" fasteners (not provided). Secure the slipfitter to the FRWB by tightening set screws.

WARNING: Options are to be installed in the field. **DO NOT** alter fittings when installing accessories for mounting the fixtures. Recheck all connections and bolts to insure they will not loosen due to vibration.



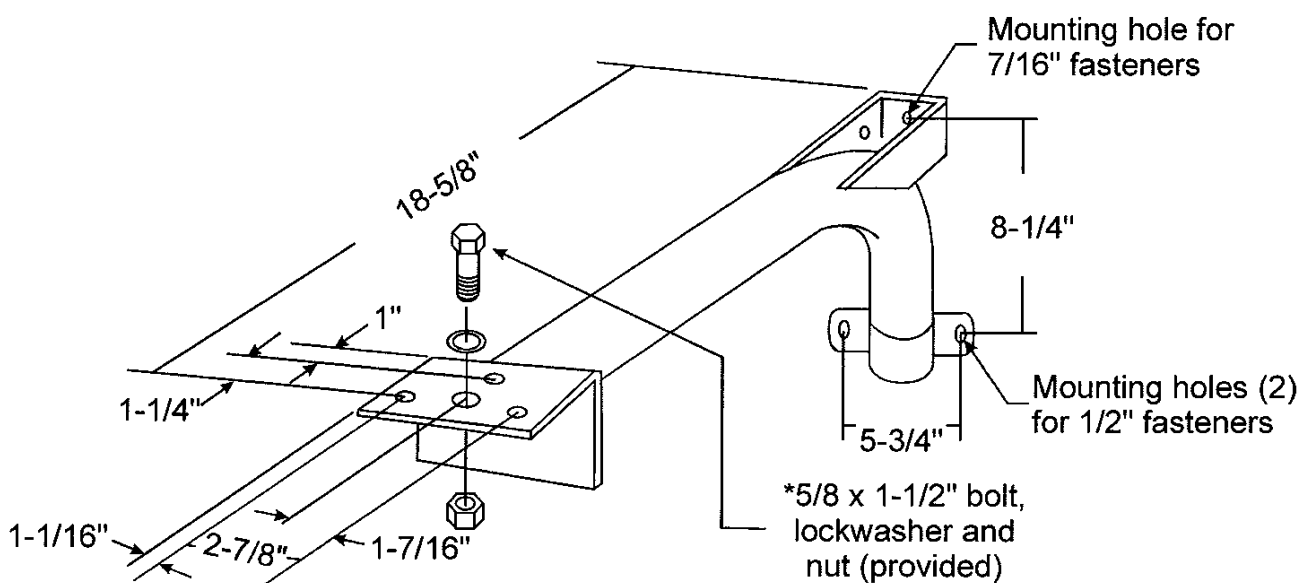
Dimensions and specifications on this page are based on the most current available data and are subject to change without notice.

FWPB

Description: Wall Pipe Mounting Bracket.

Installation: Secure the FWPB to surface with (1) $\frac{7}{16}$ " fastener and (2) $\frac{1}{2}$ " fasteners (not provided). Secure the yoke to the FWPB by using the $\frac{5}{8}$ " bolt and lockwasher provided.

WARNING: Options are to be installed in the field. **DO NOT** alter fittings when installing accessories for mounting the fixtures. Recheck all connections and bolts to insure they will not loosen due to vibration. FWPB is NOT to be mounted inverted.



**When using with TFM series yoke mounted luminaire, a $\frac{3}{8}$ " bolt, (2) lockwashers and nut must be used in place of $\frac{5}{8}$ " bolt and lockwasher that is provided. Due to yoke design, the TFM will be off center when mounted.*

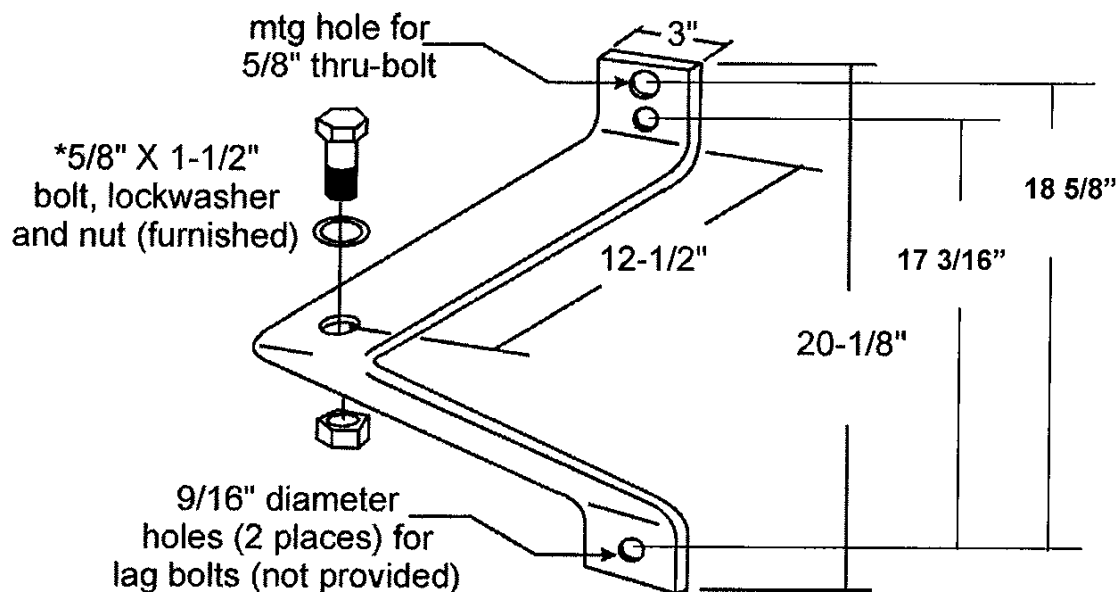
Dimensions and specifications on this page are based on the most current available data and are subject to change without notice.

FSAB

Description: Steel Angle Mounting Bracket, DDB standard. Galvanized finish (GALV) and Optional Colors Available.

Installation: Secure the FSAB to surface with 5/8" fastener and 1/2" lag bolts (not provided). Secure the yoke to the FSAB by using the bolt and lockwasher provided.

WARNING: Options are to be installed in the field. **DO NOT** alter fittings when installing accessories for mounting the fixtures. Recheck all connections and bolts to insure they will not loosen due to vibration.



**When using with TFM series yoke mounted luminaire, a 3/8" bolt, (2) lockwashers and nut must be used in place of 5/8" bolt and lockwasher that is provided. Due to yoke design, the TFM will be off center when mounted.*

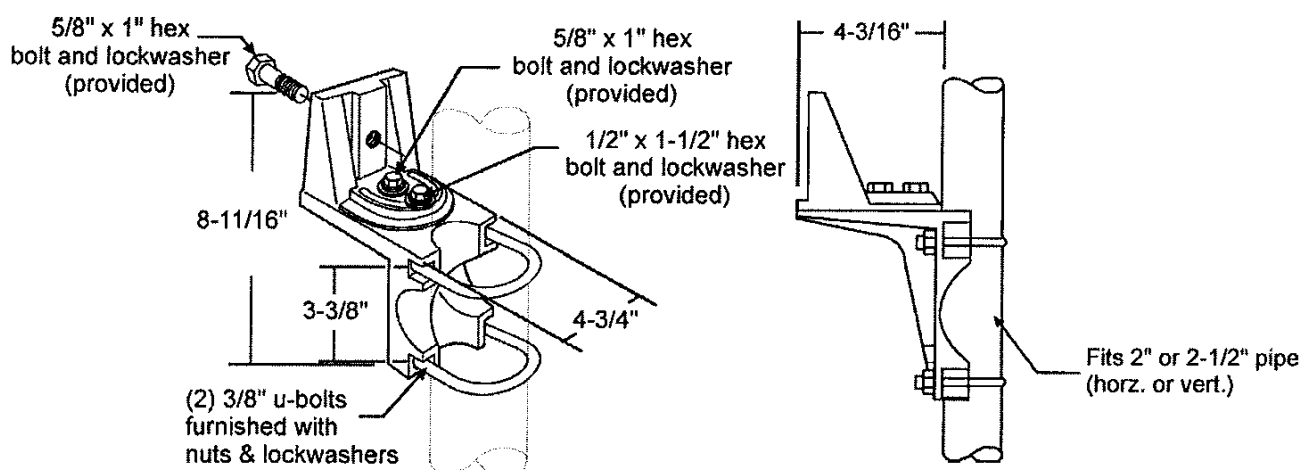
Dimensions and specifications on this page are based on the most current available data and are subject to change without notice.

FPMB

Description: Wood Pole/Wall/Pipe Mounting Bracket.

Installation: Secure the FPMB to a 2" – 2-1/2" pipe with 3/8" u-bolts, nuts and lockwashers (provided), or remove u-bolts and secure FPMB to a wall or wood pole using four 3/8" fasteners (not provided). Secure the yoke to the FPMB by using the bolt and lockwasher provided.

WARNING: Options are to be installed in the field. **DO NOT** alter fittings when installing accessories for mounting the fixtures. Recheck all connections and bolts to insure they will not loosen due to vibration.



**When using with TFM series yoke mounted luminaire, a 3/8" bolt, (2) lockwashers and nut must be used in place of 5/8" bolt and lockwasher that is provided. Due to yoke design, the TFM will be off center when mounted.*

Dimensions and specifications on this page are based on the most current available data and are subject to change without notice.