

Flush and surface mounted metal boxes and frames, surface PVC and moulded urea boxes, frames and accessories.

All flush metal boxes are manufactured from superior materials and are fitted with earth terminals, an adjustable lug for out of square alignment and include more than an adequate number of knockouts.

STEEL BOXES

16mm
PLASTERDEPTH 25mm
FLUSH **FLUSH**



3995 ZIC **10**
FOR 1, 2 AND
3 GANG
PLATESWITCHES

With earth terminal and adjustable lug
DIMENSIONS:
72 x 72mm
FIXING CENTRES:
60.3mm
BS.4662: 1970

861 ZIC **10**
1 GANG
ONE ADJUSTABLE LUG
862 ZIC **5**
2 GANG
ONE ADJUSTABLE LUG

With earth terminal, and adjustable lug
DIMENSIONS:
1 gang: 75 x 75mm
2 gang: 75 x 135mm
FIXING CENTRES:
1 gang: 60.3mm
2 gang: 120.6mm
KNOCKOUTS:
1 gang: 12 x 20mm
2 gang: 16 x 20mm
BS.4662: 1970

STEEL BOXES

35mm 46mm
FLUSH **FLUSH**



866 ZIC **10**
1 GANG
ONE ADJUSTABLE LUG

886 ZIC **5**
2 GANG
ONE ADJUSTABLE LUG

DIMENSIONS:
1 gang: 75 x 75mm
2 gang: 75 x 135mm
FIXING CENTRES:
1 gang: 60.3mm
2 gang: 120.6mm
KNOCKOUTS:
1 gang: 11 x 20mm
2 gang: 12 x 20mm
3 x 25mm
BS.4662: 1970

877 ZIC **10**
1 GANG
46MM DEEP

878 ZIC **5**
2 GANG
47MM DEEP
ONE ADJUSTABLE LUG

DIMENSIONS:
1 gang: 75 x 75mm
2 gang: 75 x 135mm
FIXING CENTRES:
1 gang: 60.3mm
2 gang: 120.6mm
KNOCKOUTS:
877: 1 x 25mm
9 x 20mm
878: 6 x 25mm
10 x 20mm
BS.4662: 1970

Mounting Box Accessories see later in this Section

STEEL BOXES

25mm
FLUSH

41mm
SURFACE FOR USE WITH LOGIC PLUS



K863 5
FOR 3 GANG
K2737 LOGIC PLUS
SWITCHSOCKET

K2211 ALM 5
1 GANG
WITHOUT KNOCKOUTS

K2213 ALM 5
1 GANG
5 X 20MM KNOCKOUTS

2211 ALM 5
1 GANG
WITHOUT KNOCKOUTS

2213 ALM 5
1 GANG
5 X 20MM KNOCKOUTS

K2212 ALM 5
2 GANG
WITHOUT KNOCKOUTS

K2214 ALM 5
2 GANG
7 X 20MM KNOCKOUTS

2212 ALM 5
2 GANG
WITHOUT KNOCKOUTS

2214 ALM 5
2 GANG
7 X 20MM KNOCKOUTS

Fitted with two earth terminals.
Two adjustable lugs.
DIMENSIONS: 203 x 73mm
FIXING CENTRES: 180.9mm
KNOCKOUTS:
20 x 20mm
BS.5733: 1995

All boxes are fitted with an earth terminal.
DIMENSIONS:
1 gang: 86 x 86mm
2 gang: 86 x 146mm
FIXING CENTRES:
1 gang: 60.3mm
2 gang: 120.6mm
BS.5733: 1995

All boxes are fitted with an earth terminal.
DIMENSIONS:
1 gang: 86 x 86mm
2 gang: 86 x 146mm
FIXING CENTRES:
1 gang: 60.3mm
2 gang: 120.6mm
BS.5733: 1995

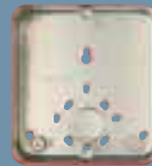
41mm
SURFACE

48mm
SURFACE

55mm
FLUSH

65mm
SURFACE

40mm
SPARE BOXES



2001 ALM 5
1 GANG
WITHOUT KNOCKOUTS

2003 ALM 5
1 GANG
5 X 20MM KNOCKOUTS

K5400 WHI 1
2 GANG
4 X 20MM KNOCKOUTS
4 X 25MM KNOCKOUTS

5120 ALM 1
FOR FLUSH
COOKER CONTROL UNIT
K5011 WHI

5268 ALM 1
FOR 32 AMP
TP & N SWITCHES
5114 WHI

K829 ALM 10
1 GANG
WITHOUT KNOCKOUTS

2002 ALM 5
2 GANG
WITHOUT KNOCKOUTS

2004 ALM 5
2 GANG
7 X 20MM KNOCKOUTS

All boxes are fitted with an earth terminal.
DIMENSIONS:
1 gang: 86 x 86mm
2 gang: 86 x 146mm
FIXING CENTRES:
1 gang: 60.3mm
2 gang: 120.6mm
BS.5733: 1995

DIMENSIONS:
86 x 146mm
FIXING CENTRES:
120.6mm
BS.5733: 1995

Fitted with two earth terminals.
DIMENSIONS:
152 x 140 x 55mm
KNOCKOUTS: 5 x 25mm.
Two in each of the top & bottom, one in the back.
BS.4177: 1992

Fitted with 2 earth terminals
DIMENSIONS:
178 x 114 x 65mm
KNOCKOUTS:
5 x 25mm.
Two in each of the top and bottom, one in the back.
BS.5733: 1995

K830 ALM 5
2 GANG
WITHOUT KNOCKOUTS

K899 ALM 10
1 GANG
5 X 20MM KNOCKOUTS

K897 ALM 5
2 GANG
8 X 20MM KNOCKOUTS

Spares or replacements for the surface Metalclad Plus range. All boxes are fitted with an earth terminal.
BS.5733: 1995

Mounting Box Accessories see later in this Section

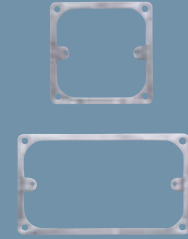
STEEL BOXES

ARCHITRAVE
FLUSH

DUAL
FLUSH



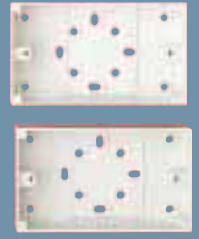
METAL FRAMES FOR PANEL MOUNTING



PVC BOXES

19mm
SURFACE

32mm
SURFACE



3921 ZIC **10**
1 GANG

3922 ZIC **5**
2 GANG

DIMENSIONS:
1 gang: 75 x 27 x 27mm
2 gang: 136 x 27 x 27mm

FIXING CENTRES:
1 gang: 60.3mm
2 gang: 120.6mm

KNOCKOUTS:
1 gang: 3 x 16mm
2 gang: 4 x 16mm

BS.4662: 1970

887 ZIC **5**
DUAL BOX

888 ZIC **10**
DIVIDING SCREEN
FOR DUAL BOX

Dual box 887 ZIC will accept any two flush accessories with 86mm square plates and two M3.5 fixing holes on 60.3mm centres.

DIMENSIONS:
75 x 161 x 35mm

KNOCKOUTS: 16 x 20mm

BS.4662: 1970

K2200 **10**
1 GANG

K2202 **5**
2 GANG

FIXING CENTRES:
1 gang: 60.3mm
2 gang: 120.6mm
BS.5733: 1995

2120 WHI **10**
FOR 1, 2 AND
3 GANG
PLATESWITCHES

With earth terminal
DIMENSIONS: 87 x 87mm
FIXING CENTRES: 60.3mm
KNOCKOUTS 'Cut-out' provided in top and bottom for 16mm oval PVC conduit. 20mm round 'push-out' type knockout in base for cable entry. Fixing holes are also provided for mounting to wall or over BS.4568 Pt. 2 small circular boxes. BS.5733: 1995

2180 WHI **10**
1 GANG

2181 WHI **10**
1 GANG

DIMENSIONS: 87 x 87mm
FIXING CENTRES: 60.3mm
KNOCKOUTS:
2180: One 'push-out' for 20mm oval conduit in top, one 'cut-out' for 20mm or 25mm oval conduit and one 20mm round 'push-out' in the base.
2181: One 'push-out' for 20mm round conduit in top and one 20mm round 'push-out' in base. BS.5733: 1995

2182 WHI **5**
2 GANG

2183 WHI **5**
2 GANG

DIMENSIONS: 87 x 148mm
FIXING CENTRES: 120.6mm
KNOCKOUTS:
2182: Two 'push-outs' for 20mm oval conduit in top, two 'cut-outs' for 20mm or 25mm oval conduit and one 20mm round 'push-out' in base.
2183: One 'push-out' for 20mm round conduit in top and one 20mm round 'push-out' in base. BS.5733: 1995

BLANK PLATES

METALCLAD PLUS



PVC BOXES

32mm
SURFACE



GUARDIAN SOCKET COVER



K3390 ALM **5**
FOR 1 GANG
SURFACE BOXES
K899 & K829

K3369 ALM **5**
FOR 2 GANG
SURFACE BOXES
K830 & K897

DIMENSIONS:
K3390: 86 x 86mm
K3369: 86 x 147mm

FIXING CENTRES:
K3390: 60.3mm
K3369: 120.6mm

BS.5733: 1995

3390 ALM **10**
FOR 1 GANG SURFACE
BOXES 899 & 829

3370 ALM **10**
FOR 1 GANG SURFACE
BOXES 891 & 821

3369 ALM **5**
FOR 2 GANG SURFACE
BOXES 892 & 822

DIMENSIONS:
3390: 81 x 81mm
3370: 76 x 76mm
3369: 76 x 136mm

FIXING CENTRES:
1 gang: 60.3mm
2 gang: 120.6mm

K2181 WHI **10**
FOR 1 GANG LOGIC PLUS POWER ACCESSORIES

K2183 WHI **5**
FOR 2 GANG LOGIC PLUS POWER ACCESSORIES

K2185 WHI **5**
FOR 3 GANG LOGIC PLUS POWER ACCESSORIES

KNOCKOUTS:
K2181: One 'cut-out' for 20mm round conduit in top face, one 'cut-out' for 20mm or 25mm oval conduit in lower face and one 20mm round 'push-out' in the base.
K2183 and K2185: One 'cut-out' for 20mm round conduit in top face, two 'cut-outs' for 20mm or 25mm oval conduit in lower face and one 20mm round 'push-out' in the base. Both boxes are suitable for fitting over 1 gang and 2 gang BS.4662 flush steel boxes respectively

DIMENSIONS:
1 gang: 87 x 87mm
2 gang: 87 x 148mm
3 gang: 87 x 208mm

FIXING CENTRES:
1 gang: 60.3mm
2 gang: 120.6mm
3 gang: 180.9mm

BS.4662: 1970
where applicable

GWR/1 **1**
1 GANG

Accessories not supplied with unit.

FIXING CENTRES:
60.3mm

Mounting Box Accessories see later in this Section

MOULDED BOXES

ARCHITRAVE
SURFACE

16mm
SURFACE

30mm
SURFACE

32mm
SURFACE

44mm
SURFACE



K2151 WHI 10
1 GANG
ARCHITRAVE BOX

K2152 WHI 5
2 GANG
ARCHITRAVE BOX

Earth terminal fitted in base of boxes.

DIMENSIONS:
1 gang: 87 x 33 x 16mm
2 gang: 148 x 33 x 16mm

FIXING CENTRES:
1 gang: 60.3mm
2 gang: 120.6mm

BS.5733: 1995

K2160 WHI 10
FOR 1, 2 AND
3 GANG LOGIC PLUS
PLATESWITCHES

K2161 WHI 5
FOR 4 AND 6 GANG
LOGIC PLUS
PLATESWITCHES

Earth terminal fitted in base of boxes. Knockouts provided in sides and bases.

DIMENSIONS:
1 gang: 87 x 87mm
2 gang: 87 x 148mm

FIXING CENTRES:
1 gang: 60.3mm
2 gang: 120.6mm

BS.5733: 1995

K2140 WHI 10
FOR 1 GANG
LOGIC PLUS
POWER ACCESSORIES.

K2142 WHI 5
FOR 2 GANG
LOGIC PLUS
POWER ACCESSORIES.

Knockouts in base and sides for cable entry

K2142 and K2153 are suitable for fitting over 1 gang and 2 gang BS.4662 flush steel boxes respectively

K2153 WHI 5
FOR 3 GANG
LOGIC PLUS
POWER ACCESSORIES.

DIMENSIONS:
1 gang: 87 x 87mm
2 gang: 87 x 148mm
3 gang: 87 x 208mm

FIXING CENTRES:
1 gang: 60.3mm
2 gang: 120.6mm
3 gang: 180.9mm

BS.5733: 1995

2140 WHI 10
FOR 1 GANG
POWER ACCESSORIES
SQUARE CORNERS

Knockouts are provided in base and sides for cable entry

DIMENSIONS:
1 gang: 87 x 87mm
2 gang: 87 x 148mm

FIXING CENTRES:
1 gang: 60.3mm
2 gang: 120.6mm

BS.5733: 1995

2031 WHI 10
FOR 1 GANG
POWER ACCESSORIES

Knockouts in base and sides for cable entry.

DIMENSIONS:
87 x 87mm
FIXING CENTRES:
60.3mm

BS.5733: 1995

MOULDED BOXES

DRY LINING
35mm
FLUSH

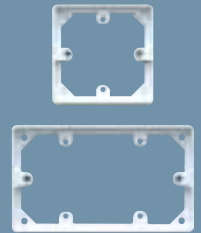
MI CABLE BOXES
37mm
SURFACE

DUAL BOX
38mm
SURFACE

40mm
SURFACE

FLANGE BOXES
45mm
FLUSH

MOUNTING FRAMES FOR TRUNKING



QFB/1 WHI 20
1 GANG

QFB/2 WHI 10
2 GANG

All round flange for flush fit. One piece moulded lug automatically snaps into place. No rear projections. Clamp device on cable entry. Will accommodate partition thicknesses between 6mm and 16mm. Earth terminal facility.

BS.4662: 1970
where applicable

K2131 WHI 5
1 GANG
10 CLAMPS

K2132 WHI 5
2 GANG
12 CLAMPS

Clamps accept 20mm sealing pots.

DIMENSIONS:
1 gang: 92 x 92mm
2 gang: 92 x 152mm

FIXING CENTRES:
1 gang: 60.3mm
2 gang: 120.6mm

BS.5733: 1995

K2025 WHI 5
FOR MOUNTING
TWO X 1 GANG
LOGIC PLUS
ACCESSORIES

This box has two slots in base with 60.3mm and 120.6 fixing centres for fitting over BS.4226 flush boxes. Knockouts provided for cable entry.

Includes integral dividing fillet.

DIMENSIONS: 86 x 172 mm
BS.5733: 1995

K2031 WHI 10
FOR 1 GANG
LOGIC PLUS
POWER ACCESSORIES

K2172 WHI 5
FOR 2 GANG
LOGIC PLUS 45 AMP
DP SWITCHES

Knockouts provided in sides and base.

K2172: Earth terminal fitted in base of box.

DIMENSIONS:
K2031: 87 x 87mm
K2172: 87 x 148mm

FIXING CENTRES:
K2031: 60.3mm
K2172: 120.6mm
BS.5733: 1995

K2061 WHI 5
1 GANG

K2062 WHI 5
2 GANG

DIMENSIONS:
K2061: 88 x 88mm
K2062: 88 x 148mm

FIXING CENTRES:
K2061: 60.3mm
K2062: 120.6mm
BS.5733: 1995

K2133 WHI 10
2 GANG 20MM DEEP
FOR LOGIC PLUS
ACCESSORIES

K2134 WHI 10
1 GANG 20MM DEEP
FOR LOGIC PLUS
ACCESSORIES

FIXING CENTRES:
1 gang: 60.3mm
2 gang: 120.6mm
BS.5733: 1995

LOGIC PLUS ACCESSORIES/BOX COMPATIBILITY CHART

SURFACE MOUNTING

| | Depth: (mm) | | | | | | | | |
|----------------------------|-------------|------------|---------|------------|------------|-----------|-----------|-----------|----|
| | 16 Moulded | 30 Moulded | 32* PVC | 38 Moulded | 40 Moulded | 41 Steel | 41* Steel | 48* Steel | 55 |
| Moulded | | | | | | | | | |
| 1 gang Sockets (13A) | | K2140 | K2181 | K2025 | K2031 | K2211 ALM | K2213 ALM | | |
| 2 gang Sockets | | K2142 | K2183 | | K2172 | K2212 ALM | K2214 ALM | K5400 | |
| 3 gang Sockets | | K2153 | K2185 | | | | | | |
| RCD Sockets | | | | | K2172 | K2212 ALM | K2214 ALM | K5400 | |
| Filtered Sockets | | | | | K2172 | K2212 ALM | K2214 ALM | K5400 | |
| Connection Units | | K2140 | K2181 | K2025 | K2031 | K2211 ALM | K2213 ALM | | |
| 20A DP Switches | | K2140 | K2181 | K2025 | K2031 | K2211 ALM | K2213 ALM | | |
| K5105 32A DP Switch | | K2140 | K2181 | K2025 | K2031 | K2211 ALM | K2213 ALM | | |
| K5205, K5215 (CK & SH) | | | | | K2172 | K2212 ALM | K2214 ALM | | |
| K5230 | | | | | | | | K5400 | |
| K5060, K5061 | | | | | K2212 | K2214 ALM | | K5400 | |
| K5040, K5041 | | | | | | | | | |
| K5001 | | | | | | | | | |
| K700 | | K2140 | K2181 | K2025 | | K2211 ALM | K2213 ALM | | |
| K701 | | | | | K2172 | | | | |
| 1, 2 & 3 gang Switches | K2160 | K2140 | K2181 | K2025 | K2031 | K2211 ALM | K2213 ALM | | |
| 4 & 6 gang Switches | K2161 | K2142 | K2183 | | K2172 | K2212 ALM | K2214 ALM | K5400 | |
| 1 gang Architrave Switch | K2151 | | | | | | | | |
| 2 gang Architrave Switch | K2152 | | | | | | | | |
| Dimmers using Pattress | | | | | | | | | |
| K1501, K1511, K1531, K1532 | K2160 | | | | | | | | |
| K1521, K1534, K1533, K1535 | K2160 | | | | | | | | |
| Dimmers not using Pattress | | | | | | | | | |
| K1501, K1511, K1531, K1532 | | K2140 | K2181 | K2025 | K2031 | | | | |
| K1521, K1534, K1533, K1535 | | K2140 | K2181 | K2025 | | K2211 ALM | K2213 ALM | | |
| K191 & K192 | | K2140 | K2181 | K2025 | | K2211 ALM | K2213 ALM | | |
| K193 & K194 | | K2142 | K2183 | | | K2212 ALM | K2214 ALM | K5400 | |
| Data/Telecom Plates | K2160 | K2140 | K2181 | K2025 | | K2211 ALM | K2213 ALM | | |

FLUSH MOUNTING

| | Depth: (mm) | | | | | | | |
|----------------------------|-------------|---------|----------|---------|-------|---------|---------|-----------|
| | 16 | 25* | 27* | 35* | 45 | 46* | 47* | 55 |
| 1 gang Sockets (13A) | | 861 ZIC | | 866 ZIC | K2061 | 877 ZIC | | |
| 2 gang Sockets | | 862 ZIC | | 886 ZIC | K2062 | | 878 ZIC | |
| 3 gang Sockets | | K863 | | | | | | |
| RCD Sockets | | | | 886 ZIC | K2062 | | 878 ZIC | |
| Filtered Sockets | | | | 886 ZIC | K2062 | | 878 ZIC | |
| Connection Units | | | | 866 ZIC | K2061 | 877 ZIC | | |
| 20A DP Switches | | | | 866 ZIC | K2061 | 877 ZIC | | |
| K5105 32A DP Switch | | | | 866 ZIC | | 877 ZIC | | |
| K5205, K5215 (CK & SH) | | | | 886 ZIC | K2062 | | 878 ZIC | |
| K5012 | | | | | | | | K5120 ALM |
| K5045 | | | | | K2061 | 877 ZIC | | |
| K5060, K5061 | | | | 886 ZIC | K2061 | | 878 ZIC | |
| K5011 | | | | | | | | K5120 ALM |
| K700 | | 861 ZIC | | 866 ZIC | K2061 | 877 ZIC | | |
| K701 | | | | | | | 878 ZIC | |
| 1, 2 & 3 gang Switches | 3995 ZIC | 861 ZIC | | 866 ZIC | K2061 | 877 ZIC | | |
| 4 & 6 gang Switches | | 862 ZIC | | 886 ZIC | K2062 | | | |
| 1 gang Architrave Switch | | | 3921 ZIC | | | | | |
| 2 gang Architrave Switch | | | 3922 ZIC | | | | | |
| Dimmers using Pattress | | | | | | | | |
| K1501, K1511, K1531, K1532 | 3995 ZIC | | | | | | | |
| K1521, K1534, K1533, K1535 | 3995 ZIC | | | | | | 878 ZIC | |
| Dimmers not using Pattress | | | | | | | | |
| K1501, K1511, K1531, K1532 | | 861 ZIC | | 866 ZIC | K2061 | 877 ZIC | | |
| K1521, K1534, K1533, K1535 | | 861 ZIC | | | K2062 | 877 ZIC | | |
| K191 & K192 | | 861 ZIC | | 866 ZIC | K2061 | 877 ZIC | | |
| K193 & K194 | | 862 ZIC | | 886 ZIC | K2062 | | 878 ZIC | |
| Data/Telecom Plates | | 861 ZIC | | 866 ZIC | K2061 | 877 ZIC | | |

■ Box supplied with accessory

■ Dependent upon modules used

* With conduit entry knockouts

NOTE: the size of cable should be taken into consideration when choosing box depth